

## 2 Port USB HDMI®/DisplayPort® Cable KVM Switch with Audio and Remote Switch – USB Powered

SV211HDUA / SV211DPUA



\*actual product may vary from photos

DE: Bedienungsanleitung - [de.startech.com](http://de.startech.com)

FR: Guide de l'utilisateur - [fr.startech.com](http://fr.startech.com)

ES: Guía del usuario - [es.startech.com](http://es.startech.com)

IT: Guida per l'uso - [it.startech.com](http://it.startech.com)

NL: Gebruiksaanwijzing - [nl.startech.com](http://nl.startech.com)

PT: Guia do usuário - [pt.startech.com](http://pt.startech.com)

For the most up-to-date information, please visit: [www.startech.com](http://www.startech.com)

## FCC Compliance Statement

This equipment has been tested and found to comply with the limits for a Class B digital device, pursuant to part 15 of the FCC Rules. These limits are designed to provide reasonable protection against harmful interference in a residential installation. This equipment generates, uses and can radiate radio frequency energy and, if not installed and used in accordance with the instructions, may cause harmful interference to radio communications. However, there is no guarantee that interference will not occur in a particular installation. If this equipment does cause harmful interference to radio or television reception, which can be determined by turning the equipment off and on, the user is encouraged to try to correct the interference by one or more of the following measures:

- Reorient or relocate the receiving antenna.
- Increase the separation between the equipment and receiver.
- Connect the equipment into an outlet on a circuit different from that to which the receiver is connected.
- Consult the dealer or an experienced radio/TV technician for help.

## Use of Trademarks, Registered Trademarks, and other Protected Names and Symbols

This manual may make reference to trademarks, registered trademarks, and other protected names and/or symbols of third-party companies not related in any way to StarTech.com. Where they occur these references are for illustrative purposes only and do not represent an endorsement of a product or service by StarTech.com, or an endorsement of the product(s) to which this manual applies by the third-party company in question. Regardless of any direct acknowledgement elsewhere in the body of this document, StarTech.com hereby acknowledges that all trademarks, registered trademarks, service marks, and other protected names and/or symbols contained in this manual and related documents are the property of their respective holders.

# Table of Contents

<b>Introduction</b> .....	<b>2</b>
Packaging Contents .....	2
System Requirements.....	2
<b>Installation</b> .....	<b>2</b>
<b>Operation</b> .....	<b>5</b>
Hotkey Quick Reference Guide .....	6
<b>Specifications</b> .....	<b>8</b>
<b>Technical Support</b> .....	<b>9</b>
<b>Warranty Information</b> .....	<b>9</b>

# Introduction

## Packaging Contents

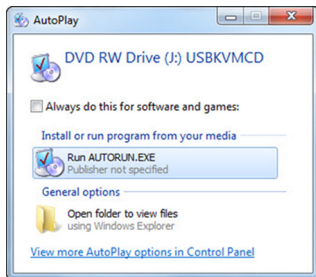
- 1 x KVM Switch
- 1 x Software CD
- 1 x Instruction Manual

## System Requirements

- Available video output - HDMI (SV211HDUA) or DisplayPort (SV211DPUA), USB and 3.5mm Audio/Microphone connections (if HDMI/DisplayPort audio is not being used)
- Monitor, speaker/microphone and USB keyboard/mouse peripheral set

## Installation

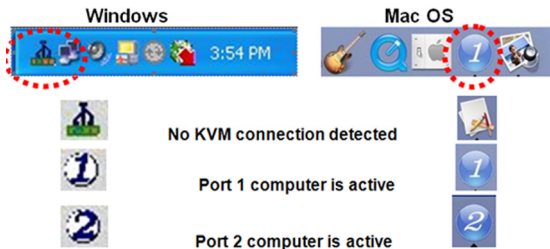
1. Before connecting the KVM Switch, insert the included installation CD into each computer's CD/DVD drive.
2. If AutoPlay runs, choose the option to browse/open the folder. Otherwise you can access the files on the CD by going into My Computer, double-click the CD/DVD drive and run Autorun.exe.



3. Click the appropriate software installation option for your system, and available ports ("2-Port KVM" - Mac or Windows), and you will be prompted to click Next several times to complete the installation.

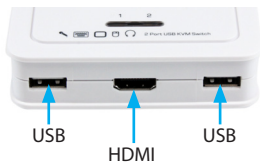


4. Once the installation is complete, a new system tray icon will display (Windows), or a new Application (Mac OS) with the following indicators.

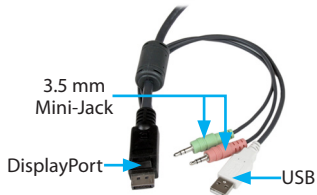
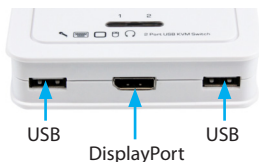


5. Connect your HDMI / DisplayPort Monitor, keyboard, mouse and speakers to the available ports on the KVM Switch.

### SV211HDUA

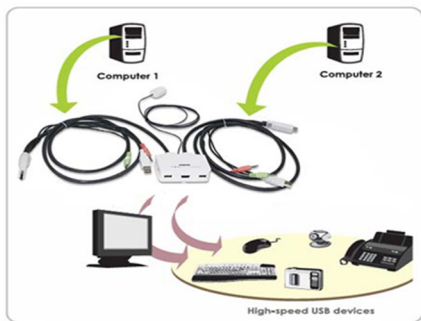


### SV211DPUA



6. Connect the attached KVM and audio cables to Computer 1.

7. Perform the same connections to Computer 2.

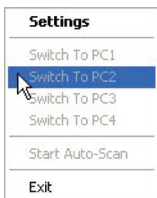


# Operation

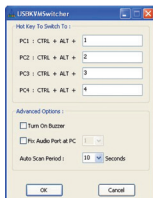
There are three methods to control your KVM Switch for computer and Audio/Mic port selection:

1. **QuickSwitch Button** - A wired remote control for direct switching control. Simply press the button to toggle between the two computers.
2. **KVM Switching Software** (Windows & Mac platform) – See “Quick Reference Sheet” below for details.

## Windows

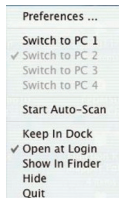


Operation Menu

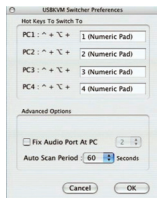


Settings Page

## Mac



Operation Menu



Preferences Page

3. **Keyboard hotkeys** – For Windows, the computer toggle key combination is “Scroll Lock + Scroll Lock”. For Mac, please refer to Define Hotkey Preceding Sequence in the Quick Reference Sheet.

**Note:** Each keystroke hotkey sequence should be pressed within two seconds, otherwise, the hotkey sequence may not be validated.

# Hotkey Quick Reference Guide

Command	Switcher Software	Description
<b>Select PC Port</b>	Right-click the KVM Switching icon to evoke the operation menu, then select whichever computer that is available for switching.	Select the active PC port
<b>Previous PC port</b>	Right-click the KVM Switching icon to evoke the operation menu, then select whichever computer that is available for switching.	Select the previous connected PC port
<b>Next PC port</b>	Right-click the KVM Switching icon to evoke the operation menu, then select whichever computer that is available for switching.	Select the next connected PC port
<b>Define Hotkey Preceding Sequence</b>	Right-click the KVM Switching icon to evoke the operation menu, then select Settings (Windows) / Configuration Dialog Box (Mac OS).	User-definable hotkeys sequence for computer selection is "Ctrl +Alt+ [command key]". For Mac, instead of Scroll Lock key, you may use User-definable hotkey sequence to switch.
<b>Autoscan</b>	Right-click the KVM Switching icon to evoke the operation menu, then select Start Auto-Scan to activate autoscanning.	Autoscan through every connected port for quick screen browsing of each port (default scan delay time = 10 second)
<b>Autoscan with Programmable Delay Time</b>	Right-click the KVM Switching icon to evoke the operation menu, then select a range of Auto-Scan Period.	Autoscan with a user-defined delay time within a range of 10 ~ 60 seconds
<b>Stop Autoscan</b>	While autoscanning, right-click the KVM Switching icon to evoke the operation menu, and then select Stop Auto-Scan to de-activate autoscanning.	Terminate Autoscan activity



<b>Beeper</b>	Right-click the KVM Switching icon to evoke the operation menu, then check the box "Turn on Buzzer".	Beeper will be functional between operations of KVM switch
<b>Keep in Dock (Mac only)</b>	Right-click the KVM Switching icon to evoke the operation menu, and then select "Keep in Dock".	KVM switching icon will be on the system tray of your desktop
<b>Open at Login (Mac only)</b>	Right-click the KVM Switching icon to evoke the operation menu, then select "Open at login".	Operate Switcher Software and login
<b>Fix Audio Port</b>	Right-click the KVM Switching icon to evoke the operation menu, then check the box "Fix Audio Port at PC" and select the desired PC port.	Check this option and then select the computer to fix the audio/mic port to the selected computer. Once this option is checked, the audio/mic port will be fixed and become non-switchable.

# Specifications

	SV211DPUA	SV211HDUA
<b>Console Connectors</b>	1 x DisplayPort (20 pin) Female 2 x USB A (4 pin) Female 2 x 3.5mm Mini-Jack (3 Position) Female	1 x HDMI (19 pin) Female 2 x USB A (4 pin) Female 2 x 3.5mm Mini-Jack (3 Position) Female
<b>Computer Connectors (per port)</b>	1 x DisplayPort (20 pin) Male 1 x USB 2.0 A (4 pin) Male 2 x 3.5mm Mini-Jack (3 Position) Male	1 x HDMI (19 pin) Male 1 x USB 2.0 A (4 pin) Male 2 x 3.5mm Mini-Jack (3 Position) Male
<b>LEDs</b>	2 x PC Selection Indicator	
<b>Switching Modes</b>	Pushbutton, Hot-key, Software	
<b>Maximum Resolution</b>	2560 x 1600	1080p (1920x1200)
<b>Audio Support</b>	3.5mm and HDMI audio	3.5mm and DisplayPort audio
<b>On Screen Display</b>	No	
<b>Cascadable</b>	No	
<b>Rack-Mountable</b>	No	
<b>Enclosure Type</b>	Plastic	
<b>Operating Temperature</b>	0°C to 40°C (32°F to 104°F)	
<b>Storage Temperature</b>	-20°C to 60°C (4°F to 140°F)	
<b>Humidity</b>	0~90% RH Non-Condensing	
<b>Cable Length</b>	0.85 m (Attached KVM Cable) / 1.4 m (Remote Switch)	
<b>Dimensions (LxWxH)</b>	88 x 60 x 25mm	
<b>Weight</b>	400g	

# Technical Support

StarTech.com's lifetime technical support is an integral part of our commitment to provide industry-leading solutions. If you ever need help with your product, visit [www.startech.com/support](http://www.startech.com/support) and access our comprehensive selection of online tools, documentation, and downloads.

For the latest drivers/software, please visit [www.startech.com/downloads](http://www.startech.com/downloads)

## Warranty Information

This product is backed by a two year warranty.

In addition, StarTech.com warrants its products against defects in materials and workmanship for the periods noted, following the initial date of purchase. During this period, the products may be returned for repair, or replacement with equivalent products at our discretion. The warranty covers parts and labor costs only. StarTech.com does not warrant its products from defects or damages arising from misuse, abuse, alteration, or normal wear and tear.

### Limitation of Liability

In no event shall the liability of StarTech.com Ltd. and StarTech.com USA LLP (or their officers, directors, employees or agents) for any damages (whether direct or indirect, special, punitive, incidental, consequential, or otherwise), loss of profits, loss of business, or any pecuniary loss, arising out of or related to the use of the product exceed the actual price paid for the product. Some states do not allow the exclusion or limitation of incidental or consequential damages. If such laws apply, the limitations or exclusions contained in this statement may not apply to you.

Hard-to-find made easy. At StarTech.com, that isn't a slogan. It's a promise.

StarTech.com is your one-stop source for every connectivity part you need. From the latest technology to legacy products — and all the parts that bridge the old and new — we can help you find the parts that connect your solutions.

We make it easy to locate the parts, and we quickly deliver them wherever they need to go. Just talk to one of our tech advisors or visit our website. You'll be connected to the products you need in no time.

Visit [www.startech.com](http://www.startech.com) for complete information on all StarTech.com products and to access exclusive resources and time-saving tools.

*StarTech.com is an ISO 9001 Registered manufacturer of connectivity and technology parts. StarTech.com was founded in 1985 and has operations in the United States, Canada, the United Kingdom and Taiwan servicing a worldwide market.*