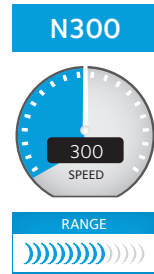




Performance & Use



- Built-in ADSL2+ Modem
- N300 WiFi speed—Faster downloads & Internet gaming
- External antennas for improved WiFi coverage
- Ethernet WAN—For fibre Internet connection
- Works with DSL Internet service providers

Overview

The NETGEAR N300 WiFi Modem Router—Essentials Edition has a built-in ADSL2+ modem for use with DSL, cable or fibre Internet service. With external antennas for improved WiFi coverage, this modem router delivers high-performance speeds of up to 300 Mbps[†] and is an ideal modem router for medium-sized homes. The N300 WiFi Modem Router delivers the speed and reliability needed for simultaneous downloads, online gaming and a secure and reliable connection to the Internet. It includes features such as Ethernet WAN for easy upgrade to cable or fibre.

Speed

Speed makes video streaming better. Speed makes online gaming more fun. Speed makes all your devices really go. And anyplace you need speed, with NETGEAR you got it. Fast download speeds up to N300 Mbps. Everything you need for a fast connected home.

WiFi Speed



N300 WIFI—Faster downloads & Internet gaming



Built-in ADSL2+ Modem

WiFi Range

Homes come in all shapes and sizes. The NETGEAR N300 WiFi Modem Router—Essentials Edition provides WiFi connectivity throughout your home for all your Internet-enabled devices.

WiFi Range



RANGE—For medium-sized homes

N300 WiFi Modem Router

Essentials Edition

Data Sheet

D1500

Reliable Connections

Stay connected—with your devices, your media, and your friends. The N300 WiFi Modem Router has external antennas that provide improved coverage and throughput.



EXTERNAL ANTENNAS—Provide improved WiFi coverage and throughput

Sharing

Relive memories and share them with others. If it's secure and shared storage access you want NETGEAR has easy ways to do it.

Share & stream your movies, music, photos



WIRELESS-N—Email, chat, surf, music, video

Ease Of Use

NETGEAR makes it easy to do more with your digital devices. The simple browser-based installation with no CD makes router installation easy using an iPad, tablet, smartphone, or computer.

Simple network management



EASY INSTALL—Easy setup for iPad®, tablets, smartphones & computers



POWER ON/OFF—Convenient power savings

Security

Keep your Internet browsing experience safe and secure with WiFi connections that offer the highest level of WPA/WPA2 security.

Safeguard your network



SECURE WIFI CONNECTIONS—Highest level wireless security with WPA/WPA2

Applications

With this router, you can create a home network for applications such as online gaming, with a fast reliable connection to the Internet and a secure wireless connection.

Ideal Uses

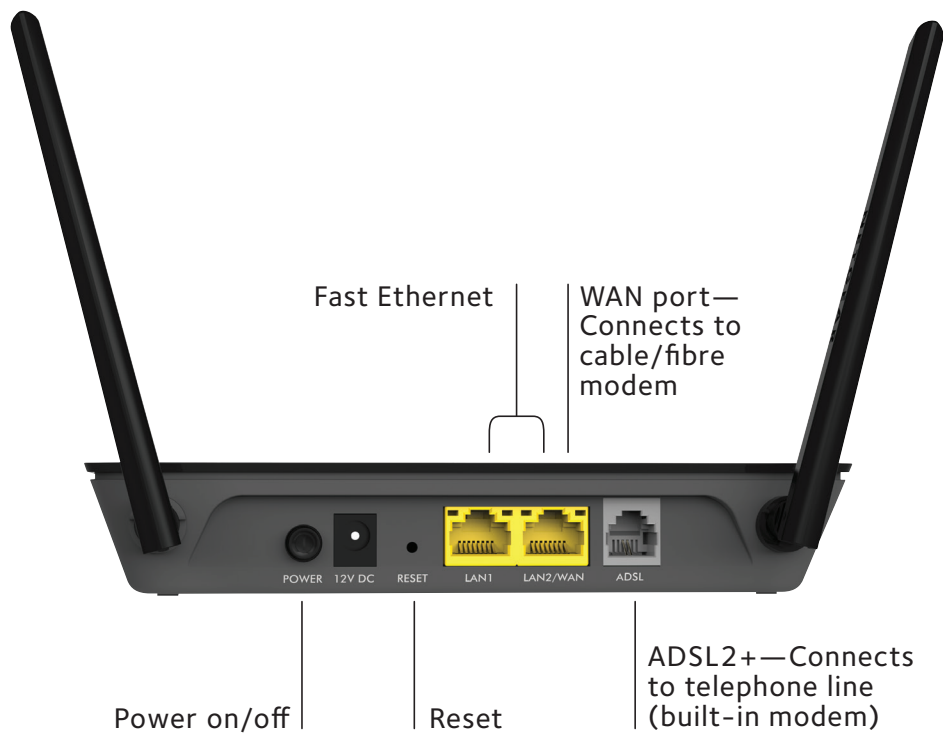


EMAIL, CHAT, SURF, MUSIC, VIDEO—Enjoy a fast, reliable and secure wireless connection to the Internet



ONLINE GAMING—Optimized for multi-player gaming with no lags

Connection Diagram



WiFi Technology	FEATURES									APPLICATIONS			
	Speed	Range	genie® App	Secure Connection	Easy Install	ReadySHARE® USB Access	Simultaneous Dual Band	Gigabit Wired	Gigabit WiFi	Email, Chat, Surf, Music, Video	Online Gaming	HD Streaming	Multiple HD Streaming
N150	Up to 150 Mbps†			✓	✓					✓			
N300	Up to 300 Mbps†			✓	✓					✓	✓		
N600	Up to 300 + 300 Mbps†		✓	✓	✓	✓	✓	✓		✓	✓	✓	

N300 WiFi Modem Router Essentials Edition

Data Sheet

D1500

PACKAGE CONTENTS

- N300 WiFi Modem Router— Essentials Edition (D1500)
- Ethernet cable
- Phone cable
- ADSL phone filter
- Power adapter
- Quick install guide

PHYSICAL SPECIFICATIONS

- Dimensions: 166 x 100 x 28 mm (6.54 x 3.94 x 1.1 in)
- Weight: 0.141 kg (0.31 lb)

WARRANTY

- Warranty localized to country of sales

SUPPORT

- 24/7 basic technical phone support provided for 90 days from purchase date when purchased from a NETGEAR authorized reseller*

TECHNICAL SPECIFICATIONS

- High-speed ADSL2+ modem built-in
- IEEE® 802.11 b/g/n 2.4GHz
- Two (2) Fast Ethernet ports

STANDARDS

- IEEE 802.11 b/g/n 2.4GHz
- One (1) ADSL2+ port
- Two (2) 10/100 Fast Ethernet ports with auto-sensing technology; one (1) Fast Ethernet port can be used as WAN port to connect to cable/fibre modem
- IPv6 Support (Internet Protocol Version 6)

SYSTEM REQUIREMENTS

- ADSL broadband Internet service
- 802.11 b/g/n 2.4GHz wireless adapter or Ethernet adapter and cable for each computer
- Microsoft® Windows® 7, 8, Vista®, XP, 2000, Mac® OS, UNIX®, or Linux®
- Microsoft® Internet Explorer® 5.0, Firefox® 2.0 or Safari® 1.4 or higher
- Use with an N300 Wireless USB Adapter (WNA3100) for maximum performance

SECURITY

- Wi-Fi Protected Access® (WPA/WPA2—PSK)
- Intrusion detection and prevention (IDS)
- Denial-of-service (DoS) attack prevention



This product is packaged with a limited warranty, the acceptance of which is a condition of sale. Warranty valid only when purchased from a NETGEAR authorized reseller.

*24/7 basic technical phone support provided for 90 days from date of purchase when purchased from a NETGEAR authorised reseller.

†Maximum wireless signal rate derived from IEEE standard 802.11 specifications. Actual data throughput and wireless coverage will vary. Network conditions and environmental factors, including volume of network traffic, interference, and building construction may lower actual data throughput and wireless coverage. NETGEAR makes no express or implied representations or warranties about this product's compatibility with any future standards.

‡Works with devices supporting Wi-Fi Protected Setup (WPS).

ATTENTION: Due to EU law, the country settings must be identical to the country where the device is operating (important due to non-harmonised frequencies in the EU).

For indoor use only. Valid for sale in all EU member states, EFTA states, and Switzerland.

NETGEAR and the NETGEAR Logo are trademarks and/or registered trademarks of NETGEAR, Inc. and/or subsidiaries in the United States and/or other countries. Other brand names mentioned herein are for identification purposes only and may be trademarks of their respective holder(s). Information is subject to change without notice. ©2014 NETGEAR, Inc. All rights reserved.