

Dell Wyse 5060 Thin Client

User Guide



Notes, cautions, and warnings

 **NOTE:** A NOTE indicates important information that helps you make better use of your product.

 **CAUTION:** A CAUTION indicates either potential damage to hardware or loss of data and tells you how to avoid the problem.

 **WARNING:** A WARNING indicates a potential for property damage, personal injury, or death.

© 2017 Dell Inc. or its subsidiaries. All rights reserved. Dell, EMC, and other trademarks are trademarks of Dell Inc. or its subsidiaries. Other trademarks may be trademarks of their respective owners.

Welcome to Dell Wyse 5060 thin client

Dell Wyse 5060 thin client is a mid-range thin client. These mid-range thin clients have a x86 processor, which allows you to run Dell Wyse ThinOS, Dell Wyse ThinLinux, Windows Embedded Standard 7P (WES7P), and Windows 10 IoT Enterprise (WIE10). The platform is used as a thin client by connecting to any monitor and allows you to use a remote access client for Virtual Desktop Infrastructure (VDI) or cloud-based computing.

Topics:

- [About this guide](#)
- [Dell Wyse external references](#)

About this guide

This guide helps to install, use and maintain Wyse 5060 thin clients which run Wyse ThinOS, Wyse ThinLinux, Windows Embedded Standard 7P, and Windows 10 IoT Enterprise. It provides hardware specifications and OS specific configurations to help you work with Wyse 5060 thin clients.

Dell Wyse external references

This section provides links to Dell support sites for **Dell Wyse thin clients**.

- [Dell reference guides](#)
- [Dell Service and Support](#) — Latest software images
- [Dell Wyse Device Manager](#) — Information about Dell remote management software
- [Dell and the Environment](#) — Information about Dell compliance with RoHS and with the Waste Electrical and Electronic Equipment (WEEE)
- [Dell and e-Recycling](#) — Information about recycling and reuse of Dell products
- [Dell Warranty Registration*](#) — Register your product



Hardware setup

This section discusses the following topics:

- Dell Wyse 5060 thin client hardware setup
- Accessing thin client BIOS settings

Topics:

- [Dell Wyse 5060 thin client hardware installation](#)
- [Accessing thin client BIOS settings](#)

Dell Wyse 5060 thin client hardware installation

For more information on the hardware installation, see *Dell Wyse 5060 thin client Quick Start Guide*.

Accessing thin client BIOS settings

- 1 Start the thin client.
The Dell logo is displayed.
- 2 During the start-up, press the **Delete** key.
The **BIOS Settings** dialog box is displayed.
- 3 Enter the default password **Fireport**.
- 4 Make the required changes in the **BIOS Settings**.

Logging in to the Dell Wyse 5060 thin client

This section includes the following topics:

Topics:

- [Logging in to the Wyse 5060 thin client running WES7P](#)
- [Logging in to the Dell Wyse 5060 thin client running Dell Wyse ThinOS](#)
- [Logging in to the Dell Wyse 5060 thin client running Dell Wyse ThinLinux](#)
- [Logging on to the Wyse 5060 thin client running WIE10](#)

Logging in to the Wyse 5060 thin client running WES7P

For security reasons, automatic logon to a user desktop is enabled on the thin client by default.

To log in as a different user or administrator:

- 1 Click **Start > Log off**, to log out from the current desktop and hold the Shift key until the logon window is displayed.
- 2 Log in by using one of the following options:
 - **Administrators** — The default name is **Administrator** and the default password is **DellCCCvdi**.
 - **Users** — The default name is **User** and the default password is **DellCCCvdi**.

IMPORTANT: Passwords are case-sensitive.

NOTE: To log in as an administrator, configure your thin client by using **Auto Logon**.

- 3 If automatic logon is not enabled, the **logon** window is displayed when you start the thin client. You can log in using the options mentioned in **step 2**.

We recommend you change the default passwords of your thin client. To change a password:

WARNING: Disable the File Based Write Filter before you change a password, and then enable it after your change. If you use thin client with the write filter turned OFF (except for image upgrades, applying security patches, registry changes and application installation) the thin client may damage the Flash/SSD storage and will invalidate the product warranty.

- 1 Log in as an Administrator.
- 2 Press CTRL+ALT+DEL. The Windows Security window is displayed.
- 3 Click **Change a Password**, and then in the Change a Password dialog box, enter the old and new passwords as applicable.

Logging in to the Dell Wyse 5060 thin client running Dell Wyse ThinOS

What you see after logging on to the server depends on the administrator configurations.



- **Users of Classic Desktop** - See the classic ThinOS desktop with full taskbar, and Connect Manager familiar to ThinOS users. This is the default option and is recommended for terminal server environments with published applications and for backward compatibility with ThinOS 6.x versions.
- **Users of Zero Desktop** - See the Zero Desktop with the Zero Toolbar showing the assigned list of connections. This option is recommended for VDI and full-screen-only connections.

However, in both the cases, you can select the desktop option you want (Classic Desktop or Zero Desktop) and create the connections you need by using the **Visual Experience** tab in the **Remote Connections** dialog box.

To open the **Remote Connections** dialog box, perform the following task:

- **Classic Desktop** — Click **User Name**, and then select **System Setup > Remote Connections**.


 **NOTE:** User Name is the user who is logged-on and is located at the lower-left pane of the taskbar

- **Zero Desktop** — Click the **System Settings** icon on the Zero Toolbar, and then select **Remote Connections**.

Logging in to the Dell Wyse 5060 thin client running Dell Wyse ThinLinux

On initial configuration, Dell recommends that you connect by using a wired connection by plugging in the network connected Ethernet cable to your thin client.

After you start your thin client, you are automatically logged in to the local **thinuser** account. By default, the password of the thinuser account is set to **thinuser**.

 **NOTE:** In cases where a GDM login is needed (for example, AD/Domain login, PNAgent login and so on), the auto-login option can be turned off through the GUI or by using the INI.

By using the Admin mode, you can perform system administration tasks such as adding or removing connections and making specific device settings.

To enter the Admin mode:

- 1 Click the **Switch to Admin** button from **Setting application** screen.
- 2 Enter the default root password in the **Password Needed** window. The default root password is **admin**.

Logging on to the Wyse 5060 thin client running WIE10

Whatever we view during the turn on or during the reboot of thin client device depends on the administrators configuration. After creating user account, an administrator can configure a user account to log on automatically or require manual logon with user credentials.

WARNING:

- Be sure to disable the Unified Write Filter (UWF) before you change a password on the thin client, and then enable the UWF after your change. If you use thin client with the write filter turned OFF (except for image upgrades, applying security patches, registry changes and application installation) the thin client may damage the Flash/SSD storage and will invalidate the product warranty.
- To change the password, hold CTRL+ALT+DEL key combination, and then click **Change a password**. However, this feature is not applicable for the **User** accounts.

Displays

This section provides information about the multiple monitor configurations.

Topics:

- [Dual Monitor Display in WES7P](#)
- [Configuring the dual head display settings in Dell Wyse ThinOS](#)
- [Configuring your display on Dell Wyse ThinLinux](#)
- [Configuring dual monitor display on WIE10](#)

Dual Monitor Display in WES7P

You can configure dual monitor display in Wyse 5060 thin client running WES7P that are dual-monitor- capable.

To configure the dual monitor settings in Wyse 5060 thin client running WES7P, go to **Start > Control Panel > Display > Change Display Settings**.

For more information, see www.microsoft.com.

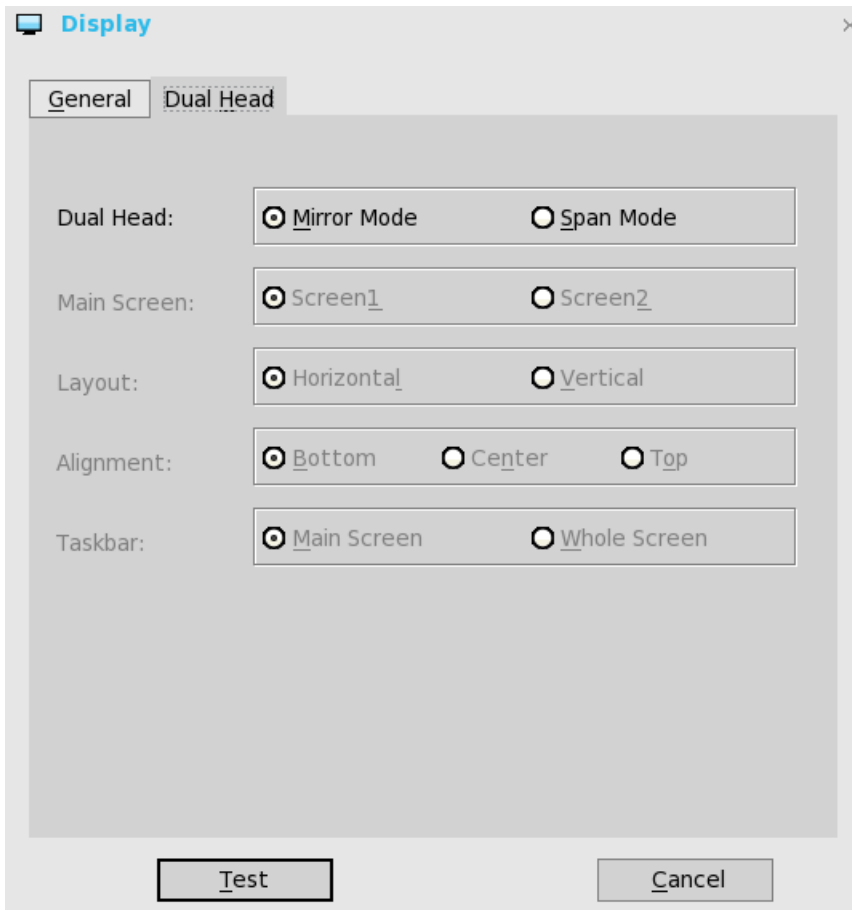
TIP: While configuring Dual-Monitor settings, set the same screen resolution for both the monitors.

Configuring the dual head display settings in Dell Wyse ThinOS

To configure the dual head display settings in Wyse ThinOS:

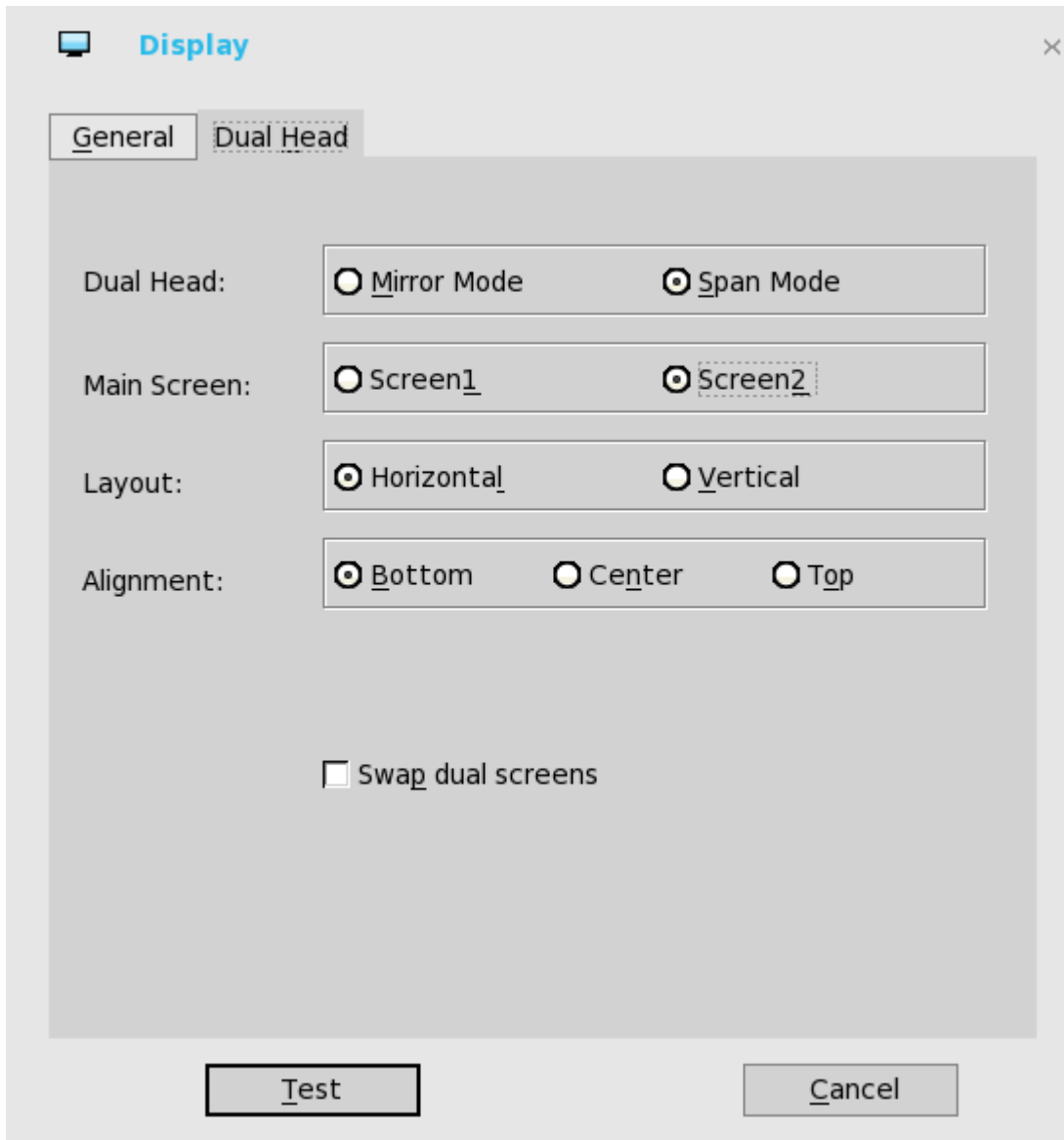
- 1 From the desktop menu, click **System Setup**, and then click **Display**.
The **Display** dialog box is displayed.
- 2 Click the **Dual Head** tab, and use the following guidelines:





This feature is applicable for supported dual-monitor-capable thin clients only.

- a **Dual Head**—Select **Mirror Mode** to have the two monitors work in a matching state, or **Span Mode** to have the two monitors work individually.
 - b **Main Screen**—Select which of the two monitors you want to be the main screen (**Screen1** or **Screen2**). The other screen is extended from the main screen.
 - c **Layout**—Select how you want the two monitors to be oriented to each other.
 - Horizontal** — where you move between the monitors from the left and right of the screens.
 - Vertical**— where you move between the monitors from the top and bottom of the screens.
 - d **Alignment**— Select how you want the monitors to be aligned **Bottom**, **Center**, or **Top**.
Bottom means screens are bottom-aligned in a horizontal orientation; Center means screens are center-aligned; Top means screens are top-aligned in a horizontal orientation.
 - e **Taskbar (Classic Desktop Only)**—Select under which screen you want the taskbar to appear **Whole Screen** or **Main Screen**
- Gamma Supported Monitors Only**— Use the Gamma Setup tab to adjust the saturation values for Red, Green and Blue on VGA connected monitors supporting gamma settings, if you feel the default settings are too light. Be aware that the Gamma Setup tab will be disabled once you click **Save+Exit**. You can enable it again by setting `rgamma={1-100} ggamma={1-100} bgamma={1-100}` in the Resolution INI parameter. For more information, see *Dell Wyse ThinOS INI Guide*.



For Swap dual screens, when you set Main Screen to Screen2, an additional check box is displayed at the bottom of the tab that allows you to swap dual screens. If you clear the check box, the Screen1 is usually the left one or the top one in dual display. When you set Main Screen to Screen2, the main screen is changed to the right screen or bottom screen. If you select the **Swap dual screens** check box, you are able to set Main Screen to Screen2, but still have it at the left side or the top side, which is considered more user friendly.

Configuring your display on Dell Wyse ThinLinux

By default, the **Customize your display** screen is available in both User mode and Admin mode. Any changes to display preferences made through this screen is saved and available for the built-in thinuser. In a **Dual-monitor** configuration, if both monitors are connected, then by default, the monitors are in extended mode. The **primary monitor** is on the left (monitor 1) and the **secondary monitor** is on the right (monitor 2). The resolutions of the monitors are auto detected by the system by analyzing the monitor's capabilities.

- 1 Click the **Display** tab.
The **Customize Your Display** page is displayed.



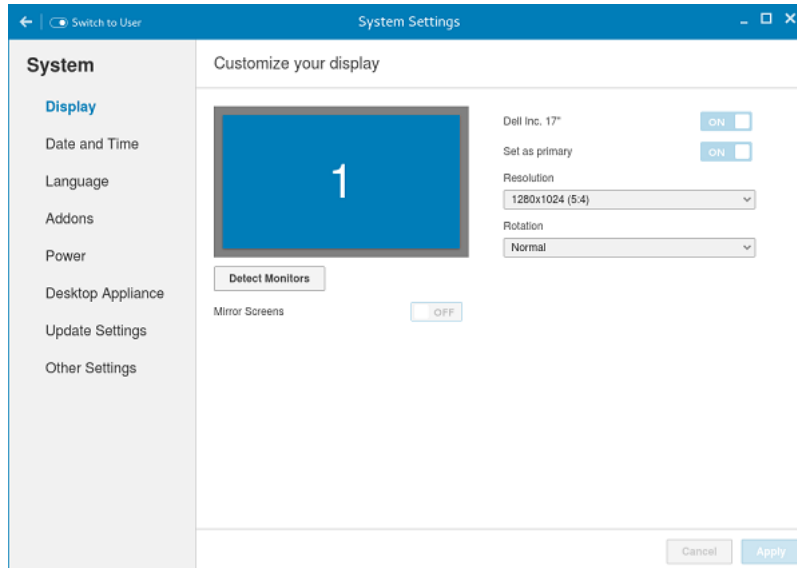


Figure 1. Display Settings

- 2 Select the preferred **Resolution** from the drop-down list.
- 3 Select the **Rotation** type from the drop-down list.
 - Normal
 - Right
 - Left
 - Upside-down
- 4 Click the **ON/OFF** button to switch between dual display and mirror mode in a dual monitor configuration.
- 5 Click the **ON/OFF** button to enable the **Set as primary** option. This option allows you to set the selected monitor as primary.
- 6 Click the **ON/OFF** button to enable the **Monitor On/Off** option. This option allows you to switch off and switch on the preferred monitor in a dual monitor configuration.

Configuring dual monitor display on WIE10

You can use the **Screen Resolution** window to configure dual monitor settings on your dual-monitor capable thin client device. To open the Screen Resolution window:

- 1 Log in as an Admin.
- 2 On the **Start** menu, click **Control Panel > Display > Change Display Settings**.

The **Screen Resolution** window is displayed. For detailed instructions on how to configure the screen resolution, go to www.microsoft.com.

For information about setting up multiple monitors, refer to [Dell documentation](#).

Networks

This section describes about the network configurations of Wyse 5060 thin client.

Topics:

- [Configuring network settings on WES7P](#)
- [Configuring the network settings on Dell Wyse ThinOS](#)
- [Configuring the network settings on Dell WyseThinLinux](#)
- [Configuring network settings on WIE10](#)

Configuring network settings on WES7P

If Dell Wyse supported WLAN hardware modules are installed on the thin client, clicking the **Network and Sharing Center** icon in the Control Panel allows you to:

- 1 **Manage Wireless Networks** (click the **Manage Wireless Networks** link):
 - **Add** —Click **Add** to open and use the wizard to add a wireless network to edit an existing wireless network, right-click it, and then select **Properties** to open and use the **Network Properties** dialog box.
 - **Adapter Properties** —Click **Adapter Properties** to open and use the properties dialog box for the wireless adapter.
 - **Profile Types** —Click **Profile Types** to open and use a dialog box to the enable or disable the ability to create Per User Profiles.
 - **Network and Sharing Center** - Click **Network Sharing Center** to return to the **Network and Sharing Center** dialog box provides network settings, and gives access to network settings.
- 2 **Change Adapter Settings** click the **Change Adapter Settings** link:
 - Click **Organize** to open the list of options you can use to organize your network connections.
 - Select a connection to display the list of command buttons you can use to view the status, connect to, enable, disable, diagnose, rename, and change the settings of the connection.
- 3 **Change Advanced Sharing Settings** (click the **Change Advanced Sharing Settings** link): Select the network profile settings you want for each of your networks.

Configuring the network settings on Dell Wyse ThinOS

To configure the network settings use the following options:

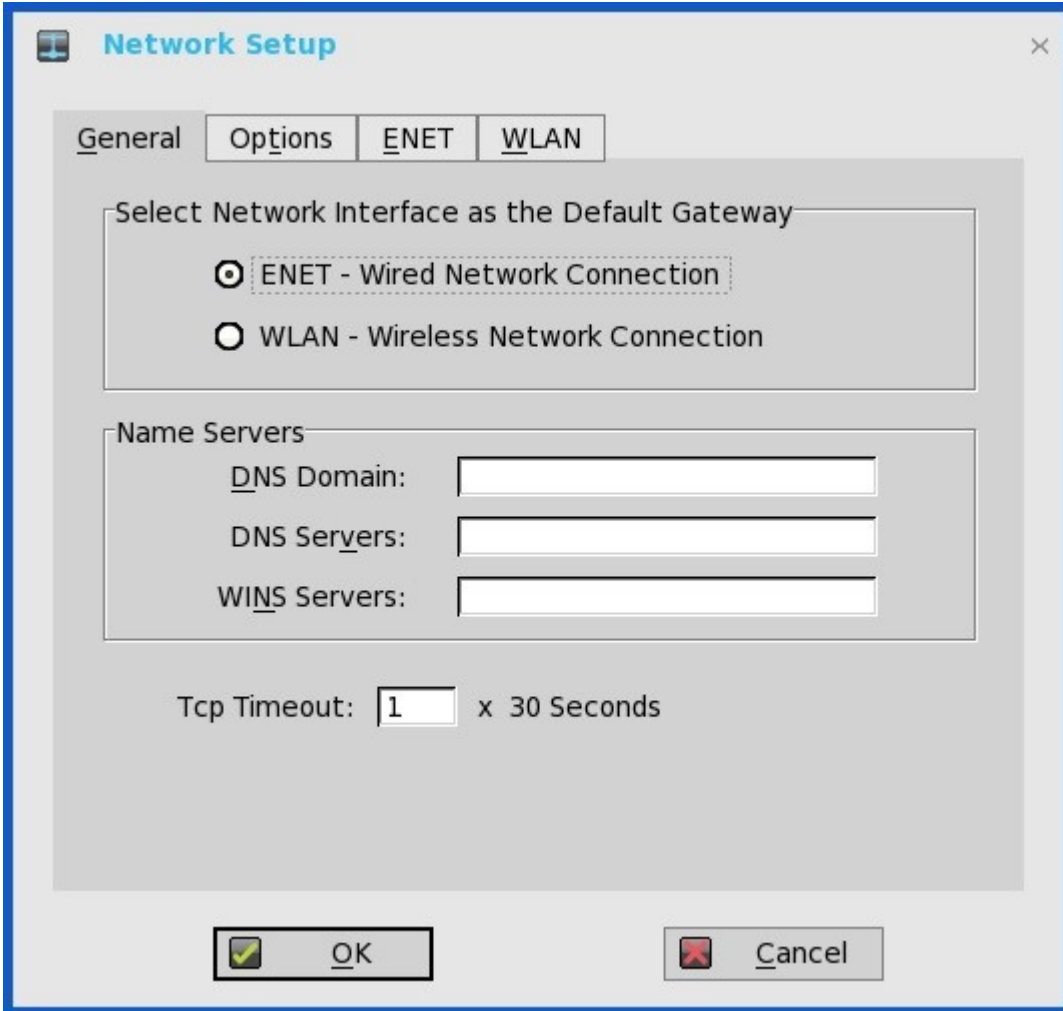
- [Configuring the general settings.](#)
- [Configuring the DHCP options settings.](#)
- [Configuring the ENET settings.](#)
- [Configuring the WLAN settings.](#)



Configuring the General settings

To configure the general network settings:

- 1 From the desktop menu, click **System Setup**, and then click **Network Setup**.
The **Network Setup** dialog box is displayed.




- 2 Click the **General** tab, and use the following guidelines:
 - a To set the default gateway, select the type of network interface from the available options.
 - 1 **Single Network support** — Either wireless or wired network is connected.
 - **ENET** — Click this option, if you want set up the Ethernet Wired Network Connection.
 - **WLAN** — Click this option, if you want to set up the Wireless Network Connection.
 - If you use wireless network after selecting ENET connection or wired network after selecting WLAN connection, then the system log "WLAN: set default gate way xxx.xxx.xxx.xxx" for first case and "ENET: set default gate way xxx.xxx.xxx.xxx" for second case are printed to ensure that the UI setting reflects the actual usage.

NOTE: The User Interface (UI) will not be changed automatically.

- 2 **Dual Network support** — Both wireless and wired networks are connected. The default gateway is determined by the UI settings.
- b Enter the URL address of the DNS domain in the **DNS Domain** box.

- c Enter the IP address of the DNS server in the **DNS Server** box.

Use of DNS is optional. DNS allows you to specify remote systems by their host names rather than IP addresses. If a specific IP address (instead of a name) is entered for a connection, it is used to make the connection. Enter the DNS domain and the network address of an available DNS server. The function of the DNS domain entry is to provide a default suffix to be used in name resolution. The values for these two boxes may be supplied by a DHCP server. If the DHCP server supplies these values, they replace any locally configured values. If the DHCP server does not supply these values, the locally configured values will be used.

 **NOTE: You can enter up to 16 DNS server addresses, separated by a semicolon, comma, or space. The first address is for the primary DNS server and the rest are secondary DNS servers or backup DNS servers .**

- d Enter the IP address of the WINS server in the **WINS Server** box.

Use of WINS is optional. Enter the network address of an available WINS name server. WINS allows you to specify remote systems by their host names rather than IP addresses. If a specific IP address (instead of a name) is entered for a connection, it is used to make the connection. These entries can be supplied through DHCP, if DHCP is used. DNS and WINS provide essentially the same function, name resolution. If both DNS and WINS are available, the thin client attempts to resolve the name using DNS first and then WINS.

You can enter two WINS server addresses (primary and secondary), separated by a semicolon, comma, or space.

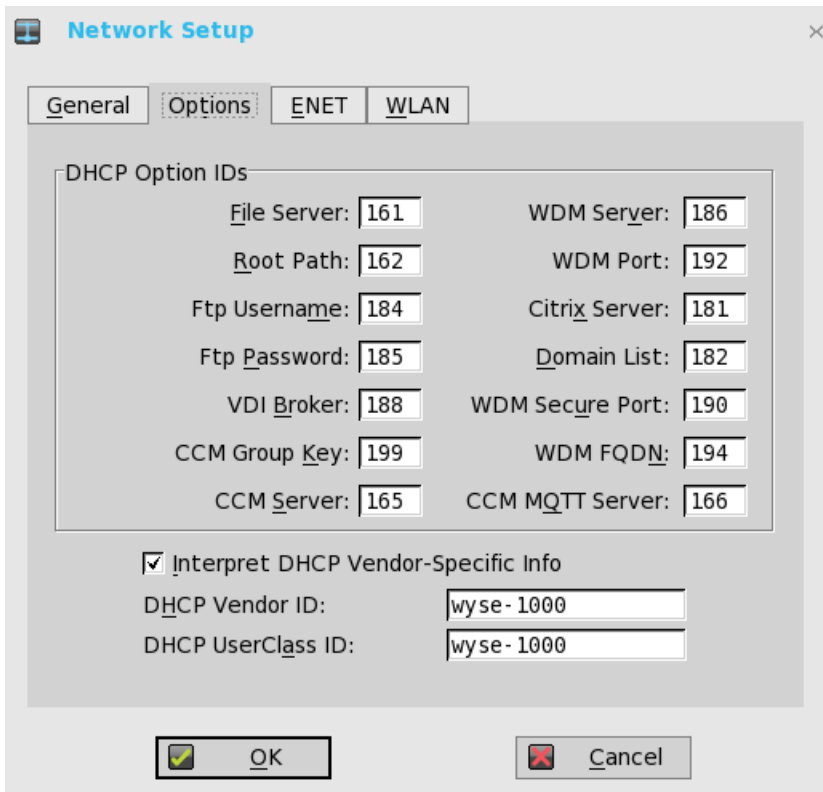
- e Enter the digit multiplier of 30 seconds in the **TCP Timeout** box to set the time-out value of a TCP connection. The value must be **1** or **2** which means the connection time-out value is from $1 \times 30 = 30$ seconds to $2 \times 30 = 60$ seconds. If the data for connecting to the server is not acknowledged and the connection is timed out, setting the time-out period retransmits the sent data and again tries to connect to the server till the connection is established.

- 3 Click **OK** to save the settings.

Configuring the DHCP Options Settings

To configure the options settings:

- 1 From the desktop menu, click **System Setup**, and then click **Network Setup**.
The **Network Setup** dialog box is displayed.
- 2 Click the **Options** tab, and use the following guidelines:

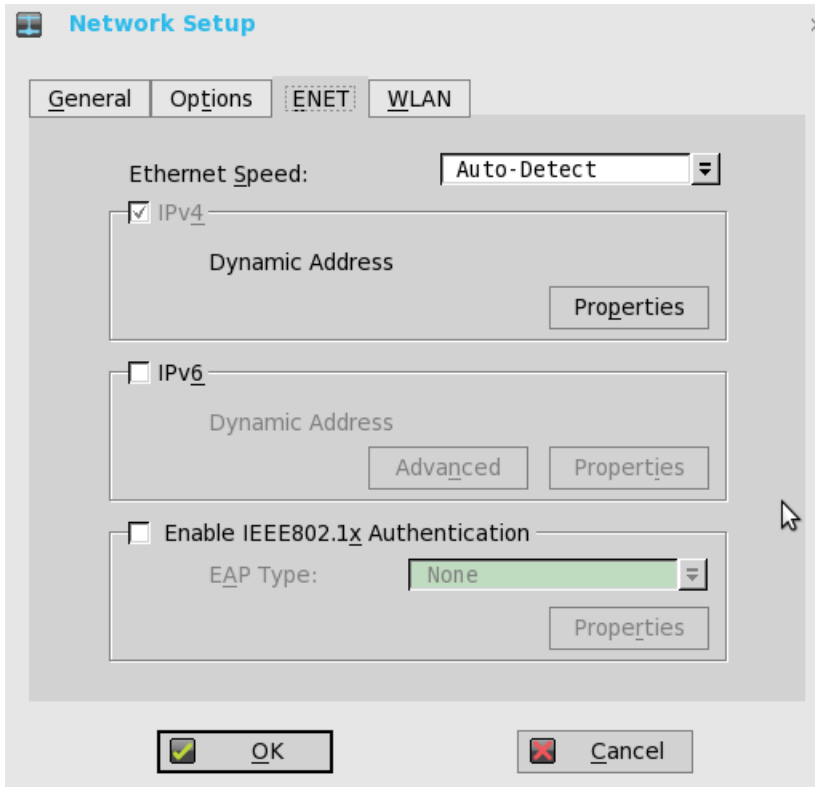


- a **DHCP Option IDs** — Enter the supported DHCP options. Each value can only be used once and must be between **128** and **254**.
 - b **Interpret DHCP Vendor-Specific Info** — Select this check box for automatic interpretation of the vendor information.
 - c **DHCP Vendor ID** — Shows the DHCP Vendor ID when the dynamically allocated over DHCP/BOOTP option is selected.
 - d **DHCP UserClass ID** — Shows the DHCP UserClass ID when the dynamically allocated over DHCP/BOOTP option is selected.
- 3 Click **OK** to save the settings.

Configuring the ENET Settings

To configure the ENET settings:

- 1 From the desktop menu, click **System Setup**, and then click **Network Setup**.
The **Network Setup** dialog box is displayed.
- 2 Click the **ENET** tab, and use the following guidelines:



- a **Ethernet Speed** — Normally the default (**Auto-Detect**) should be selected, but another selection can be made if automatic negotiation is not supported by your network equipment. Selections include **Auto-Detect**, **10 MB Half-Duplex**, **10 MB Full-Duplex**, **100 MB Half-Duplex**, **100 MB Full-Duplex**, and **1 GB Full-Duplex**.
The **10 MB Full-Duplex** option can be selected locally at the device, however, this mode may need to be negotiated through **AutoDetect**.
- b The **IPV4** check box is selected by default. Click **Properties** to set various options supported by IPV4.
 - **Dynamically allocated over DHCP/BOOTP** — Selecting this option enables your thin client to automatically receive information from the DHCP server. The network administrator must configure the DHCP server using DHCP options to provide information. Any value provided by the DHCP server replaces any value entered locally on the Options tab, however, locally entered values are used if the DHCP server fails to provide replacement values.
 - **Statically specified IP Address** — Select this option to manual enter the IP Address, Subnet Mask and Default Gateway:
 - **IP Address** — Must be a valid network address in the server environment. The network administrator must provide this information.
 - **Subnet Mask** — Enter the value of the subnet mask. A subnet mask is used to gain access to machines on other subnets. The subnet mask is used to differentiate the location of other IP addresses with two choices: same subnet or other subnet. If the location is other subnet, messages sent to that address must be sent through the Default Gateway, whether specified through local configuration or through DHCP. The network administrator must provide this value.
 - **Default Gateway** — Use of gateways is optional. Gateways are used to interconnect multiple networks (routing or delivering IP packets between them). The default gateway is used for accessing the internet or an intranet with multiple subnets. If no gateway is specified, the thin client can only address other systems on the same subnet. Enter the address of the router that connects the thin client to the internet. The address must exist on the same subnet as the thin client as defined by the IP address and the subnet mask. If DHCP is used, the address can be supplied through DHCP.
- c Select the **IPV6** check box, and then click **Advanced** to select various IPV6 supported setting options from the available check boxes.
- d Click **properties** and use the following guidelines:
 - **Wait DHCP** — Selecting this option enables your thin client to wait for IPV6 DHCP before the sign-in, if not selected the system will only wait for IPV4 DHCP if enabled.
 - **Dynamically allocated over DHCP/BOOTP** — Selecting this option enables your thin client to automatically receive information from the DHCP server. The network administrator must configure the DHCP server (using DHCP options) to

provide information. Any value provided by the DHCP server replaces any value entered locally on the **Options** tab, however, locally entered values are used if the DHCP server fails to provide replacement values.

- **Statically specified IP Address** — Select this option to manually enter the IP Address, Subnet Mask and Default Gateway.
 - **IP Address** — Must be a valid network address in the server environment. The network administrator must provide this information.
 - **Subnet Mask** — Enter the value of the subnet mask. For more information, see various options supported by IPV4 in this section.
 - **Default Gateway** — Use of gateways is optional. For more information, see various options supported by IPV4 in this section.
- **DNS Servers** — Use of DNS is optional. DNS allows you to specify remote systems by their host names rather than IP addresses. If a specific IP address (instead of a name) is entered for a connection, it is rather than DNS is used to make the connection. Enter the network address of an available DNS server. The value for this box may be supplied by a DHCP server. If the DHCP server supplies this value, it replaces any locally configured value. If the DHCP server does not supply this value, the locally configured value is used.
- e Select the check box to enable IEEE802.1x Authentication.
 - **EAP Type** — If you have enabled the **Enable IEEE 802.1x authentication** check box, select the EAP Type option you want (**TLS**, **LEAP** or **PEAP**).
 - **TLS** — If you select the **TLS** option, click **Properties** to open and configure the **Authentication Properties** dialog box.
 - Select the **Validate Server Certificate** check box because it is mandatory to validate your server certificate.

NOTE:

The CA certificate must be installed on the thin client. Also note that the server certificate text field supports a maximum of approximately 127 characters, and supports multiple server names.

- If you select the **Connect to these servers** check box, the box is enabled where you can enter the IP address of server.
- Click **Browse** to find and select the Client Certificate file and Private Key file you want.

The following kinds of server names are supported — all examples are based on Cert common name **company.dell.com**

NOTE:

Using only the FQDN, that is company.wyse.com does not work. You must use one of the options (note that *.dell.com is the most common option as multiple authentication servers may exist): servername.dell.com

*.dell.com

*dell.com

*.com

- f **LEAP** — If you select the **LEAP** option, click **Properties** to open and configure the **Authentication Properties** dialog box. Be sure to use the correct username and password for authentication. The maximum length for the username or the password is 64 characters.
- g **PEAP** — If you select the **PEAP** option, click **Properties** to open and configure the **Authentication Properties** dialog box. Be sure to select either **EAP_GTC** or **EAP_MSCHAPv2**, and then use the correct username, password and domain. Validate Server Certificate is optional.

NOTE:

The server certificate text box for LEAP and PEAP supports a maximum of approximately 127 characters, and supports multiple server names.

- h To configure EAP-GTC, enter the username only. The password or PIN is required when authenticating. To configure EAP-MSCHAPv2, enter the username, password and domain.

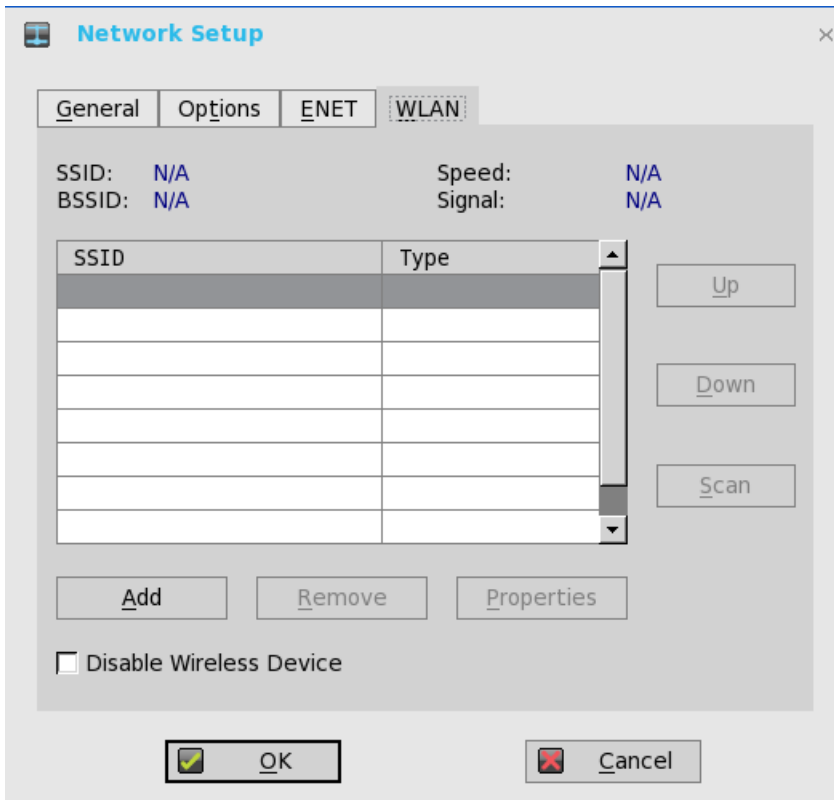
IMPORTANT: The domain/username in the username box is supported, but you must leave the domain box blank.

The CA certificate must be installed on the thin client and the server certificate is forced to be validated. When EAP-MSCHAPV2 is selected in EAP type in the **Authentication Properties** dialog box (for PEAP IEEE802.1x authentication), an option to hide the domain is available for selection. Username and Password boxes are available for use, but the **Domain** text box is disabled.

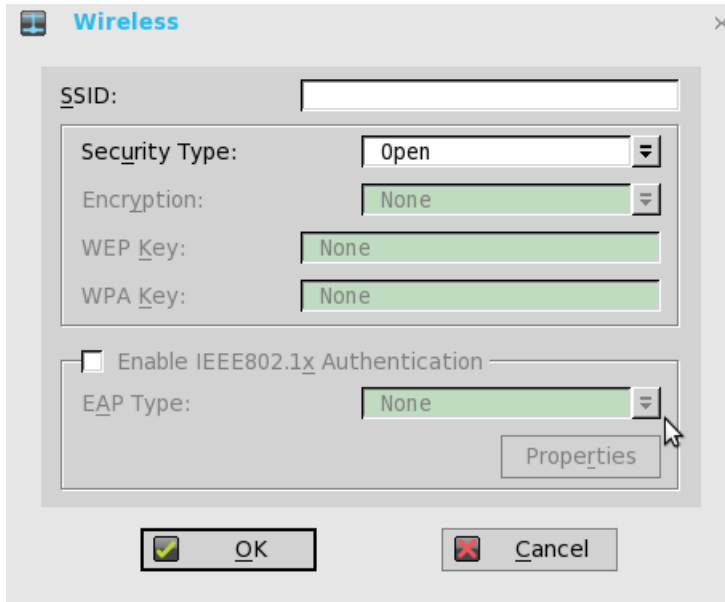
- 3 Click **OK** to save the settings.

Configuring the WLAN Settings

- 1 From the desktop menu, click **System Setup**, and then click **Network Setup**. The **Network Setup** dialog box is displayed.
- 2 Click the **WLAN** tab, and use the following guidelines:



- a **Add**— Use this option to add and configure a new SSID connection. You can configure the SSID connection from the available security type options.



- b After you configure the SSID connection, the added SSID connection is listed on the page of the **WLAN** tab.
 - c **Remove** — Use this option, if you want to remove a SSID connection by selecting the SSID connection from the list.
 - d **Properties** — Use this option to view and configure the authentication properties of a SSID connection that is displayed in the list.
 - e Select the **Disable Wireless Device** check box, if you want to disable a wireless device.
- 3 Click **OK** to save the settings.

Configuring the network settings on Dell WyseThinLinux

On the **System Settings** page, click the **Network** tab to view the **Network Settings** page.

- 1 Click the **Network** icon.

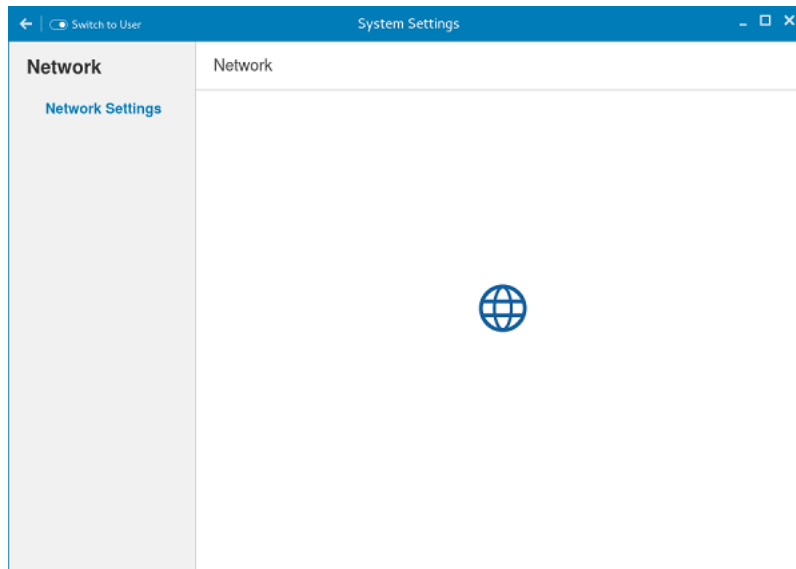


Figure 2. Network Settings

- 2 The **Network settings** page is displayed. In the left-pane, the following tabs are available for you to configure.

- Wi-Fi
- Wired
- Network proxy

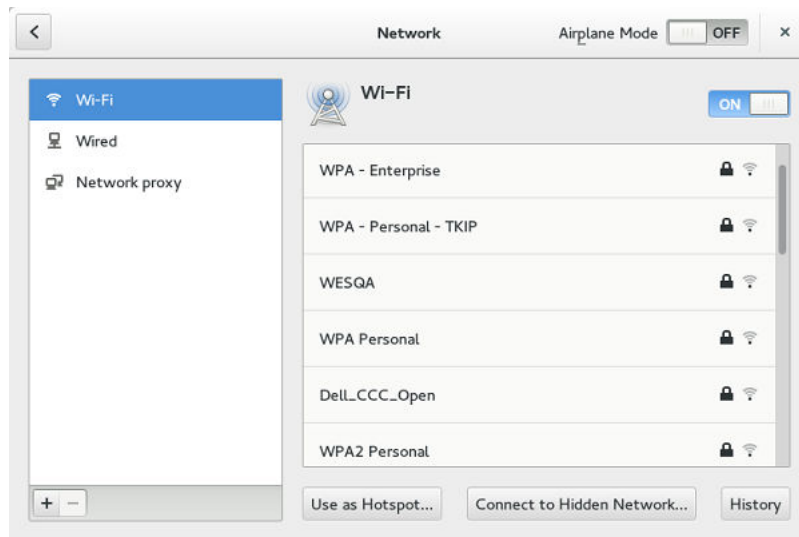


Figure 3. Network Settings page

Configuring the wi-fi settings

To configure the Wi-Fi settings, perform the following steps:

- 1 In the left-pane, click **Wi-Fi** tab.
- 2 Click the **ON/OFF** button to enable or disable the Wi-Fi option. The list of wireless SSID is displayed if broadcast is enabled.

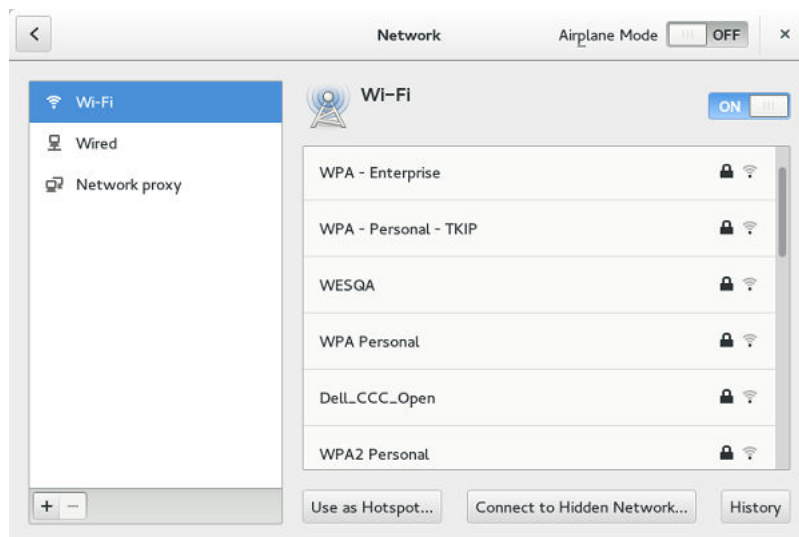


Figure 4. Wi-Fi Settings

- 3 To connect to Wi-Fi connection, select the preferred wireless SSID from the list displayed.
- 4 Click the **ON/OFF** button to enable or disable the **Airplane Mode** option after you log in to the session.
- 5 Click the **Connect to Hidden Wi-Fi Network** button. The Connect to Hidden Wi-Fi Network window is displayed.



Figure 5. Hidden Wi-Fi Network

- 6 Enter the name and security details of the hidden network that you want to connect to.

Table 1. Hidden network

Parameter	Description
Connection	From the drop-down list, select the type of connection.
Network name	Enter the preferred network name.
Wi-Fi security	From the drop-down list, select the security type.

- 7 On the **Network** page, click the **History** button to view the previous Wi-Fi connections and details.

Configuring wired network connection settings

To configure the wired connection settings, perform the following steps:

- 1 Click the **Wired** tab. The following attributes are displayed if the network cable is connected to your thin client and wired connection is established.
 - IP Address
 - Hardware Address
 - Default Route
 - DNS

NOTE: After the network is disconnected, only hardware address and last used information are displayed.

- 2 On the lower-right corner of the page, click the **Settings** icon to configure the Wired Network connections.
 - a In the **Details** tab, the following attributes are displayed.
 - IP Address
 - Link Speed
 - Hardware Address
 - Default Route
 - DNS
- 3 Click the **Security** tab to configure the 802.1x security settings.
 - a Click the **ON** button to enable the 802.1x Security for your network connection.
 - b From the **Authentication** drop-down list, select the type of authentication you want to set for your network connection. The available options are:
 - MDS
 - TLS
 - FAST

- Tunneled TLS
 - Protected EAP (PEAP)
- c If the authentication type is selected as **MD5**, you must configure the following options:

Table 2. MD5 configuration

Parameter	Description
Username	Enter the Username for the network connection.
Password	Enter the password you want to set for the connection.
Ask for this password every time	If this check box is selected, you will be prompted to enter the password every time when you connect to the network.
Show Password	Select this check box if you want to allow the user to view the hidden password.

- d If the authentication type is selected as **TLS**, you must configure the following options.

Table 3. TLS

Parameter	Description
Identity	Enter your Identity.
User certificate	Select the User certificate from the list or upload your personal certificate stored locally. To upload your personal certificate, click the Folder icon, and then browse to the location where you have stored the certificate.
CA Certificate	Select the CA certificate from the list or upload your CA certificate stored locally. To upload your CA certificate, click the Folder icon, and then browse to the location where you have stored the certificate.
Private key	Select the private key from the list or upload your private key stored locally. To upload your private key, click the Folder icon, and then browse to the location where you have stored the certificate.
Private key password	Enter the password that you want to set for the private key.
Show Password	Select this check box if you want to allow the user to view the hidden password.

- e If the authentication type is selected as **FAST**, you must configure the following options.

Table 4. FAST

Parameter	Description
Anonymous identity	Enter the username you want to set for Anonymous Authentication Identity.
PAC provisioning	Select this check box to enable the PAC provisioning authentication. From the drop-down list, select any of the following PAC provisioning options:



Parameter	Description
	<p>Anonymous – Select this option to establish a secure anonymous TLS communication with the client and provide it with a PAC.</p> <p>Authenticated – Select this option to enable a secure server-side authentication and provide the client with a proxy auto-config (PAC) file.</p> <p>Both – Select this option if you want to allow both Anonymous and Authenticated PAC provisioning.</p>
PAC file	<p>Select the PAC file from the list or upload your CA certificate stored locally.</p> <p>To upload your PAC file, click the Folder icon, and then choose the certificate from the location where you have stored the certificate.</p>
Inner authentication	From the drop-down list, select the inner authentication method you want to set. The available options are GTC and MSCHAPv2.
Username	Enter the Username for the network connection.
Password	Enter the password you want to set for the connection.
Ask for this password every time	If this check box is selected, you will be prompted to enter the password every time when you connect to the network.
Show Password	Select this check box if you want to allow the user to view the hidden password.

f If the authentication type is selected as **Tunneled TLS**, you must configure the following options.

Table 5. Tunneled TLS

Parameter	Description
Anonymous identity	Enter the username that you want to set for Anonymous Authentication Identity.
CA certificate	<p>Select the CA certificate from the list or upload your CA certificate stored locally.</p> <p>To upload your CA certificate, click the Folder icon, and then browse to the location where you have stored the certificate.</p>
Inner authentication	From the drop-down list, select the inner authentication method that you want to set. The available options are GTC and MSCHAPv2.
Username	Enter the Username for the network connection.
Password	Enter the password that you want to set for the connection.
Ask for this password every time	If this check box is selected, you will be prompted to enter the password every time when you connect to the network.

Parameter	Description
Show Password	Select this check box if you want to allow the user to view the hidden password.

g If the Authentication type is selected as **Protected EAP (PEAP)**, you must configure the following options.

Table 6. Protected EAP (PEAP)

Parameter	Description
Anonymous identity	Enter the username you want to set for Anonymous Authentication Identity.
CA certificate	Select the CA certificate from the list or upload your CA certificate stored locally. To upload your CA certificate, click the Folder icon, and then browse to the location where you have stored the certificate.
PEAP version	Select the PEAP version type you want to use for EAP authentication. The available options are: <ul style="list-style-type: none"> · Automatic · Version 0 · Version 1
Inner authentication	From the drop-down list, select the inner authentication method that you want to set. The available options are GTC and MSCHAPv2.
Username	Enter the Username for the network connection.
Password	Enter the password that you want to set for the connection.
Ask for this password every time	If this check box is selected, you will be prompted to enter the password every time when you connect to the network.
Show Password	Select this check box if you want to allow the user to view the hidden password.

4 Click the **Identity** tab and configure the following settings:

NOTE: Only Administrators are allowed to authenticate these settings by entering the admin password in the root privilege authentication dialog box after a particular setting is changed or configured.

- a **Name**— Specifies the default name of the wired connection. If you want to set your preferred name for the connection, enter the name and then click **Apply**.
- b **MAC Address**— Specifies the MAC address of the network connection.
- c **Cloned Address**— Specifies the IP address that is cloned by the router.
- d **Maximum transmission unit (MTU)**— Specifies the size (in bytes) of the largest protocol data unit that the protocol layer can pass onwards.
- e **Connect automatically**— Select this check box to automatically connect to the network after you plug-in the network wire.
- f **Make available to other users**— Select this check box if you want to allow other users to configure these settings.

5 Click the **IPv4** tab and do the following:

- a Enable the **IPv4** button to configure the IPv4 settings.
- b From the **Addresses** drop-down menu, select the type of IPv4 configuration. The available options are:
 - Automatic (DHCP)
 - Manual



- Link-Local Only
- c If **Automatic (DHCP)** option is selected, you must configure the following options.

Table 7. Automatic (DHCP)

Parameter	Description
DNS	Enable the Automatic button, if you want the thin client to automatically fetch the DNS Server.
Server	Specifies the IP address of the DNS Server. Click the + icon to add a new DNS server to the list.
Routes	Enable the Automatic button to turn on the automatic IPv4 routing.
Address	Specifies the Router IP address.
Netmask	Specifies the Netmask. Netmask is used to divide an IP address into subnets and specify the network's available hosts.
Gateway	Specifies the IP address of the default Gateway.
Metric	Specifies the Metric value for the network connection.
Use this connection only for resources on its network	Select this check box, if you want to allow the wired connection only for resources on its network.

- d If **Manual option** is selected, you must specify the IP address, Netmask IP and Gateway IP along with the parameters mentioned in Table 1: Automatic (DHCP).
 - e If **Link-Local Only** option is selected, the DNS and Routes options are disabled. This is applicable only for communications within the host link or the host domain.
- 6 Click the **IPv6** tab and do the following:
- a Enable the **IPv6** button to configure the IPv6 settings.
 - b From the **Addresses** drop-down menu, select the type of IPv6 configuration. The available options are:
 - Automatic
 - Automatic, DHCP only
 - Manual
 - Link-Local Only

The IPv6 configuration is similar to configuring the IPv4 Settings. For IPv4 configuration, see the IPv4 settings in this section.

- 7 Click the **Reset** tab and do the following:
- a Click **Reset** to reset the settings for your network connection, including passwords. However, the previous network is displayed as a preferred network.
 - b Click **Forget** to remove all details relating to this network that you do not want to automatically connect to.
- 8 Click **Apply** to save your configured settings.

NOTE: Click the **Add Profile** tab to add a new network profile. On the right pane, you must configure the following options:

- Security
- Identity
- IPv4
- IPv6

The configuration of all these tabs are similar to **Wired Network connections configurations** described in this section.



Configuring the network proxy settings

To configure the Network proxy settings, complete the following task:

- 1 Click the **Network proxy** tab.
- 2 From the Proxy drop-down menu, select the type of Proxy method you want to deploy. The available Proxy methods are:
 - None
 - Manual
 - Automatic
- 3 If **Manual proxy** method is selected, you must configure the following options:
 - a Enter the **HTTP Proxy** port details for your network connection.
 - b Enter the **HTTPS Proxy** port details for your network connection.
 - c Enter the **FTP Proxy** port details for your network connection.
 - d Enter the **SOCKS host** port details for your network connection.
 - e Use the **Ignore Hosts** option to set up proxy to ignore all local addresses.
- 4 If **Automatic proxy** method is selected, you must type the configuration URL address in the field.

NOTE: Web Proxy Autodiscovery is used when a Configuration URL is not provided. Dell does not recommend this option for untrusted public networks.

Adding a network connection

NOTE: Adding additional wired Ethernet connections is allowed but the added interface is not used in any of the ThinLinux features.

To add a new network connection, complete the following tasks:

- 1 On the lower-left corner of the page, click the **+** icon.
The **Add Network Connection** dialog box is displayed. The following options are listed for you to configure.
 - VPN
 - Bond
 - Bridge
 - VLAN
- 2 Click **VPN** to add a VPN network connection. You must import a file from the stored location to configure the VPN settings.
- 3 Click **Bond** to add and configure the Bond network connection for your thin client.
 - a Click the **General tab** to select or deselect the following check boxes.
 - Automatically connect to this network when it is available.
 - All users may connect to this network.
 - Automatically connect to VPN when using this connection.
 - b Click the **Bond** tab, and configure the following options:
 - 1 Type a name for your network interface.
 - 2 The number of bonded connections that are set up are listed here. To add a new bond connection, click the **Add** button and select the type of connection you want to create. The available options are Ethernet and InfiniBand.
 - 3 Select the type of Network Mode from the drop-down list. The available options are:
 - Round-robin
 - Active Backup
 - XOR



- Broadcast
 - 802.3ad
 - Adaptive transmit load balancing
 - Adaptive load balancing
- 4 **Link Monitoring** — Select the type of link monitoring from the drop-down list. The available options are:
- MII (recommended)
 - ARP
- 5 Enter the time in ms for the link up delay duration.
- 6 Enter the time in ms for the link down delay duration.
- c Click the **IPv4 Settings** tab, and do the following:
- 1 From the drop-down list select the following method for IPv4 authentication.
 - If **Automatic (DHCP)** method is selected, you must configure the following options:
 - 1 Additional DNS Servers — Type the IP addresses of domain name users that are used to resolve host names. Use commas to separate multiple domain name server addresses.
 - 2 Additional Search Domains — Type the IP addresses of domains used when resolving host names. Use commas to separate multiple domains.
 - 3 DHCP client ID — Enter the ID for the DHCP client. This client identifier allows the network administrator to customize your computer's configuration.
 - 4 Require IPv4 addressing for this connection to complete — The IPv4 address is required to complete the connection. If the IPv4 address is not available, then the connection is not configured.
 - 5 Click the **Routes** button to edit IPv4 routes for Bond connection.
 - a Click **Add** to add an IP address. After an IP is added, Netmask, Gateway and Metric specific to that IP are displayed.
 - b Select the check box if you want to ignore the automatically obtained routes.
 - c Select this check box if you want to use your connection only for resources on that particular network.
 - If **Automatic (DHCP) addresses only** method is selected, you must configure the following options:
 - 1 DNS Servers — Type the IP addresses of domain name users that are used to resolve host names. Use commas to separate multiple domain name server addresses.
 - 2 Search domains — Type the IP addresses of domains that are used when resolving host names. Use commas to separate multiple domains.
 - 3 DHCP client ID — Enter the ID for the DHCP client. This client identifier allows you to customize your computer's configuration.

NOTE: The other settings remain same as described in automatic (DHCP) method for IPv4 authentication.

- If **Manual** method is selected, you must configure the following options:
 - 1 Click **Add** to add an IP address. After an IP is added, Netmask, Gateway specific to that IP are displayed.
 - 2 DNS Servers — Type the IP addresses of domain name users that are used to resolve host names. Use commas to separate multiple domain name server addresses.
 - 3 Search domains — Type the IP addresses of domains used when resolving host names. Use commas to separate multiple domains.

NOTE: The DHCP client ID option and Ignore automatically obtained routes check boxes are disabled.

The other settings remains the same as described in automatic (DHCP) method for IPv4 authentication.

- If **Link-Local Only** method is selected, the DNS Servers, Search domains, DHCP client ID, and Routes options are disabled. You can select the **Require IPv4 addressing for this connection to complete** check box to allow the

connection to complete. The IPv4 address is required to complete the connection. If the IPv4 address is not available, then the connection is not configured.

- If **Shared to other computers** method is selected, the DNS Servers, Search domains, DHCP client ID, and Routes options are disabled. You can select the **Require IPv4 addressing for this connection to complete** check box to allow the connection to complete. The IPv4 address is required to complete the connection. If the IPv4 address is not available, then the connection is not configured.
- d Click the **IPv6 Settings** tab. From the drop-down list, select the following method type for IPv4 authentication. The available options are:
- Ignore
 - Automatic
 - Automatic, addresses only
 - Manual
 - Link-Local Only

 **NOTE:** The settings are same as configuring the IPv4 settings tab described in this section.

- 4 Add and configure the Bridge network connection for your thin client.
- a Click the **Bridge** tab, and configure the following options:
- 1 Interface name — Type the name for your network interface.
 - 2 Bridged connections — The number of bonded connections that are set up are listed here. To add a new bond connection, click the Add button and select the type of connection you want to create. The available options are Ethernet, Wi-Fi, and VLAN.
 - 3 Aging time — Enter the Aging time duration in seconds.
 - 4 Enable STP — Select this check box to enable the Spanning Tree Protocol (STP) for your connection.
 - 5 Priority — Enter the priority value.
 - 6 Forward delay — Enter the forward delay duration in seconds.
 - 7 Hello time — Enter the hello time duration in seconds.
 - 8 Max age — Enter the value for the maximum age.
- b To configure the **General** tab, **IPv4 Settings** tab, and **IPv6 Settings** tab for Bridge connection, see the configuration details for Bond connection in this section.
- 5 Configure the VLAN network connection for your thin client.
- a Click the **VLAN** tab, and configure the following options:
- 1 Parent interface — Type the name for your parent interface.
 - 2 VLAN id — Enter the value for the VLAN id.
 - 3 VLAN interface name — Type the name for your VLAN interface.
 - 4 Cloned MAC address — Type the cloned MAC address.
 - 5 MTU — Specifies the size (in bytes) of the largest protocol data unit that the protocol layer can pass onwards.
- b To configure the **General** tab, **IPv4 Settings** tab, and **IPv6 Settings** tab for VLAN connection, see the configuration details for Bond connection in this section.
- 6 Click **Save** to save your settings.

Configuring network settings on WIE10

Network services provided to thin clients can include DHCP, FTP file services, and DNS. Configuring your network services depends on the availability in your environment, designing and managing it.

You can configure your network services using:



Using Dynamic Host Configuration Protocol (DHCP)

A thin client is initially configured to obtain its IP address and network configurations from a DHCP server. A DHCP server provides the IP address or DNS name of the FTP server and the FTP root-path location of software in Microsoft.msi form for access through the DHCP upgrade process.

DHCP is recommended to configure and upgrade thin clients as it saves time and efforts needed to complete these processes locally on multiple thin clients. If a DHCP server is not available, fixed IP addresses can be assigned and must be entered locally for each device.

A DHCP server can also provide the IP address of the WDM server. For more information, [Wyse Device Manager \(WDM\) software for remote administration](#).

Using Domain Name System (DNS)

Thin client devices accept valid DNS names registered on a DNS server available to the enterprise intranet. The thin client device sends a query to DNS server on the network for name to IP resolution. DNS allows hosts to be access by their registered DNS names rather than their IP address.

Every Windows DNS server in Windows 2000 and later includes Dynamic DNS (DDNS) and every server registers dynamically with the DNS server. For DHCP entry of DNS domain and server location information, see [Using Dynamic Host Configuration Protocol \(DHCP\)](#)

Peripherals

This section provides the information about using and configuring the peripherals on Wyse 5060 thin client.

Topics:

- [Configuring and using Peripherals on WES7P](#)
- [Configuring peripherals settings on Wyse ThinOS](#)
- [Configuring peripherals settings on Wyse ThinLinux](#)
- [Configuring and using peripherals on WIE10](#)

Configuring and using Peripherals on WES7P

The thin client has USB ports available on it.

- 2*USB 2.0 (front)
- 2*USB 2.0 (rear)
- 2*USB 3.0 (rear)

To provide the services through the ports, install the appropriate software for the thin client.

NOTE:

- You can install other services and add-ins that are available from the Dell website for free or for a licensing fee.
For more information, see the [Dell Wyse Support Site](#).
- You can configure the thin client device to use Bluetooth- enabled Peripherals. For more information, see [Bluetooth connections on WES7P](#).

Device Manger: Bluetooth Connections

You can access Bluetooth- enabled devices in your thin-client device, if your thin-client has optional Wireless Bluetooth capability.

- To manage an existing Bluetooth device :
 - Go to **Start > Control Panel > Device Manager**
 - Click **Bluetooth Radios**.
 - To manage an existing Bluetooth device, double-click on the **Bluetooth icon**

You can update drivers using the **Driver** tab

- To add Bluetooth- enabled device:
 - Go to **Start > Control Panel > Devices and Printers**
Devices and Printers window is displayed
 - Click **Add a Device**.
 - Turn on the Bluetooth — enabled devcie and ensure that the device is discoverable.
 - When the device is discoverable by the thin-client device, click **Next** and follow the wizard.



Configuring peripherals settings on Wyse ThinOS

The **Peripherals** dialog box enables you to configure the settings for the keyboard, mouse, camera, and printer.

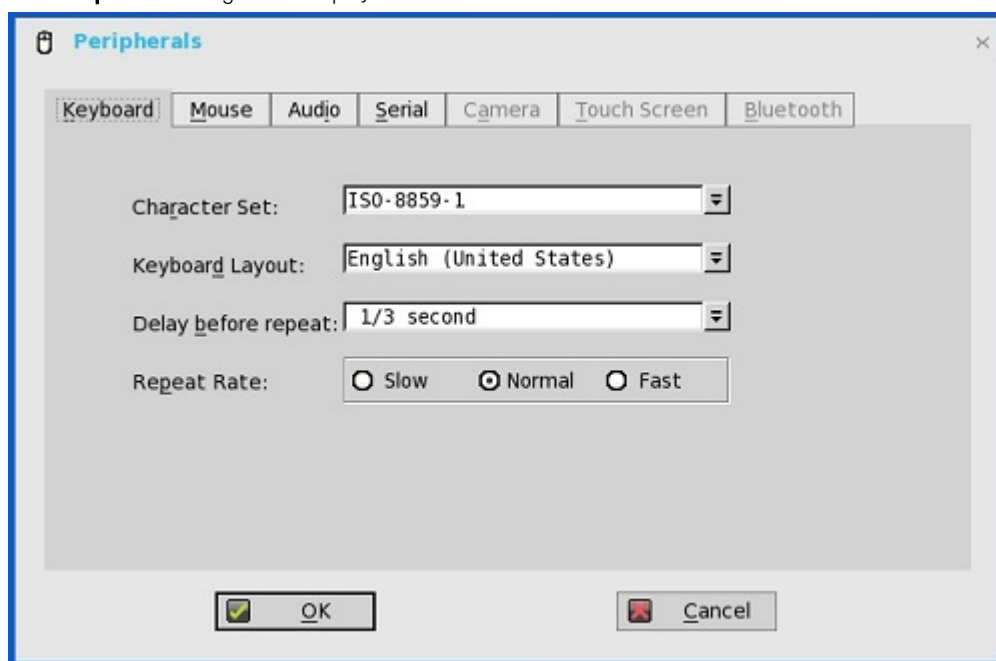
- [Configuring keyboard settings](#)
- [Configuring mouse settings](#)
- [Configuring camera settings](#)
- [Configuring printer setup](#)

Configuring keyboard settings

To configure the Keyboard settings:

- 1 From the desktop menu, click **System Setup**, and then click **Peripherals**.

The **Peripherals** dialog box is displayed.



- 2 Click the **Keyboard** tab and set the Character Set, Keyboard Layout, Delay Before Repeat and Repeat Rate parameters. The following table explains the parameters present on the Peripherals dialog box.

Parameter	Description
Character Set	Specifies the character set. Each character is represented by a number. The ASCII character set, for example, uses the numbers 0 through 127 to represent all English characters and special control characters. European ISO character sets are similar to ASCII, but they contain additional characters for European languages.
Keyboard Layout	Presently the keyboard languages listed in the Keyboard layout drop-down list are supported. The default value is English (United States) .
Delay Before Repeat	Specifies the repeat parameters for held-down key. Select the Delay before repeat value as either 1/5 second , 1/4 second , 1/3

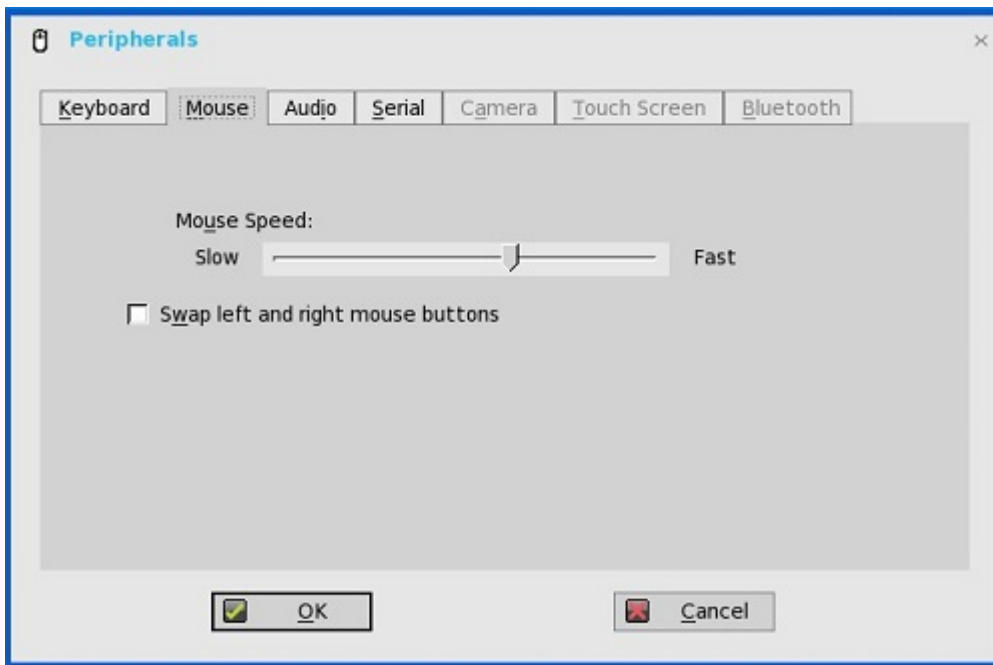
	second, 1/2 second, 3/4 second, 1 second, 2 seconds, or No Repeat. The default is 1/3 second .
Repeat Rate	Select Slow, Medium, or Fast. The default value is Medium.

- 3 Click **OK** to save the settings.

Configuring mouse settings

To configure the mouse settings:

- 1 From the desktop menu, click **System Setup**, and then click **Peripherals**.
The **Peripherals** dialog box is displayed.
- 2 Click the **Mouse** tab to select the mouse speed and mouse orientation.

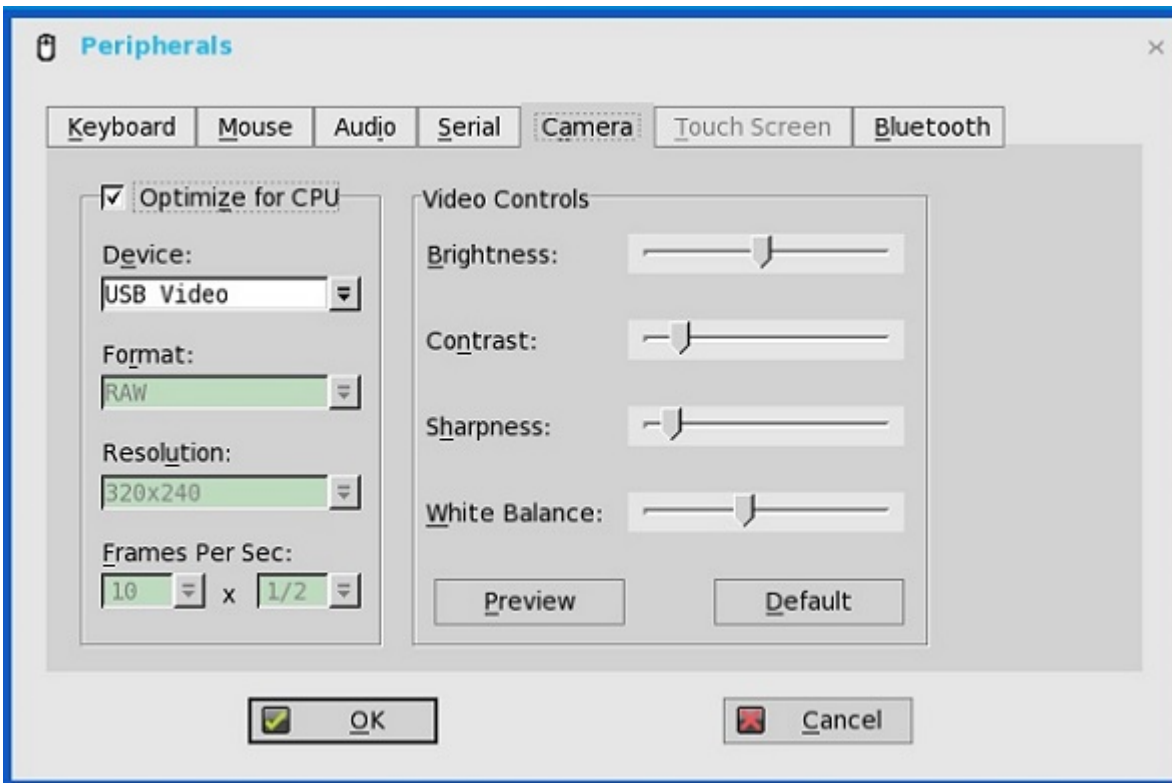


- 3 Select the **Swap left and right mouse buttons** check box to swap mouse buttons for left-handed operations.
- 4 Click **OK** to save the settings.

Configuring camera settings

Use the **Camera** tab to interface with cameras that are locally connected to the thin client (USB) and supported by a UVC driver. When using the HDX RealTime webcam feature of XenDesktop 5 or XenApp 6, you can control options such as maximum resolution and frames per second (10 FPS is recommended).

By default, the format of USB camera is set to RAW.



NOTE:

You can optimize performance and modify the frame rate per second, if the **Optimize for CPU** check box is selected—supported values include 1/1, 1/2, 1/3, 1/4, 1/5, and 1/6—directly from the thin client (if the webcam supports Universal Video Driver).

This feature is experimental and does not currently support central configuration (INI parameters). Also, this feature is CPU intensive and is recommended for high performance products such as the Wyse 5010 thin client with ThinOS (D10D), Wyse 3030 LT thin client with ThinOS and Wyse 3030 LT thin client with PCoIP.

Configuring printer settings

Use the **Printer Setup** dialog box to configure network printers and local printers that are connected to the thin client. Through its USB ports, a thin client can support multiple printers. If more than one printer is to be used and another port is not available on your thin client and the port that is to be used must be shared with a USB modem converter, connect a USB hub to the port.

Configuring peripherals settings on Wyse ThinLinux

On the **System Settings** page, click the **Peripherals** icon. The following tabs are displayed on the left pane of the System Settings page.

- Keyboard
- Mouse
- Printers
- Sound

Setting the keyboard preferences

The **Keyboard** setting page enables you to set the Keyboard preferences and make the Keyboard layout.

NOTE: By default, the Keyboard screen is available in both User mode and Admin mode. Any changes made through Keyboard preferences screen is saved and continued for the built-in thinuser

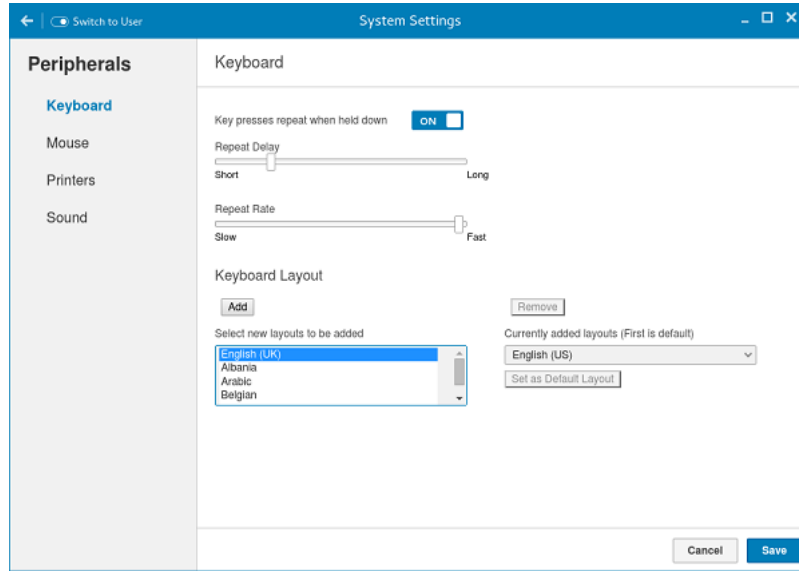


Figure 6. Keyboard Preferences

- 1 Click the **ON/OFF** button to disable or enable the **Key presses repeat when held down** option after you log in to the session.
- 2 Move the slider to the left to decrease the repeated delay time of the pointer or move the slider to the right to increase the repeated delay time of the pointer.
- 3 Move the slider to the left to decrease the repeat rate of the pointer or move the slider to the right to increase the repeat rate of the pointer.
- 4 In the **keyboard layout** box, select the layout you want to use and click **Add** to include the preferred layout in the **currently added layouts** list.
- 5 Select the preferred keyboard layout from the currently added layouts list, and click **Set as Default Layout** button to set the default layout.

NOTE: The default keyboard layout is listed on the top of the currently added layout list.

- 6 Click **Save** to save your changes.

Setting the mouse preferences

By default, the **Mouse** screen is available in both User mode and Admin mode. Any changes made through the Mouse preferences screen is saved and continued for the built-in thinuser.

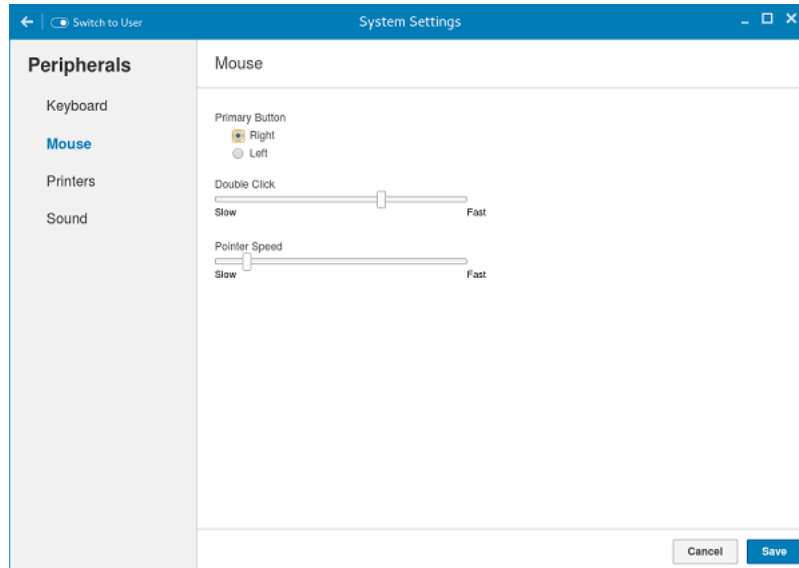


Figure 7. Mouse Preferences

The Mouse setting page enables you to set the Mouse preferences.

- 1 Click **Right** or **Left** to set the **primary button** of the mouse.
- 2 Move the slider to the left to increase the speed of the pointer when double-clicked or move the slider to the right to decrease the length of double-clicked.
- 3 Move the slider to the left to increase the speed of the mouse pointer or move the slider to the right to decrease the speed of the mouse pointer.
- 4 Click **Save** to save your changes.

Configuring the printer settings

By default, the **Printers** screen is available only in Admin mode. On the **Printer setting** page, click the printer icon to start the **gnome-control-center printer**.

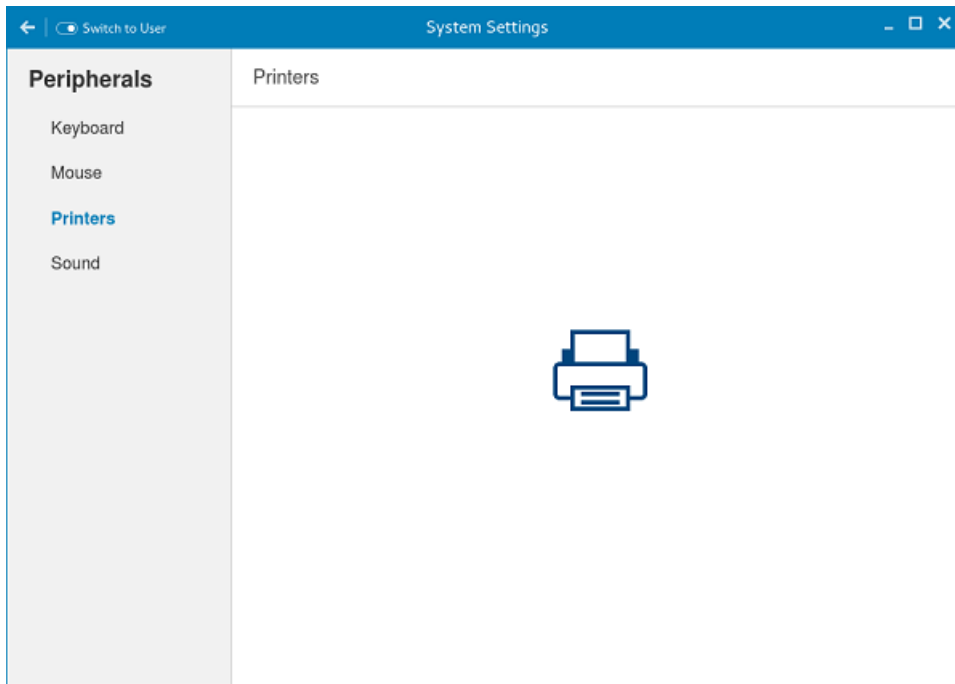


Figure 8. Printer Settings

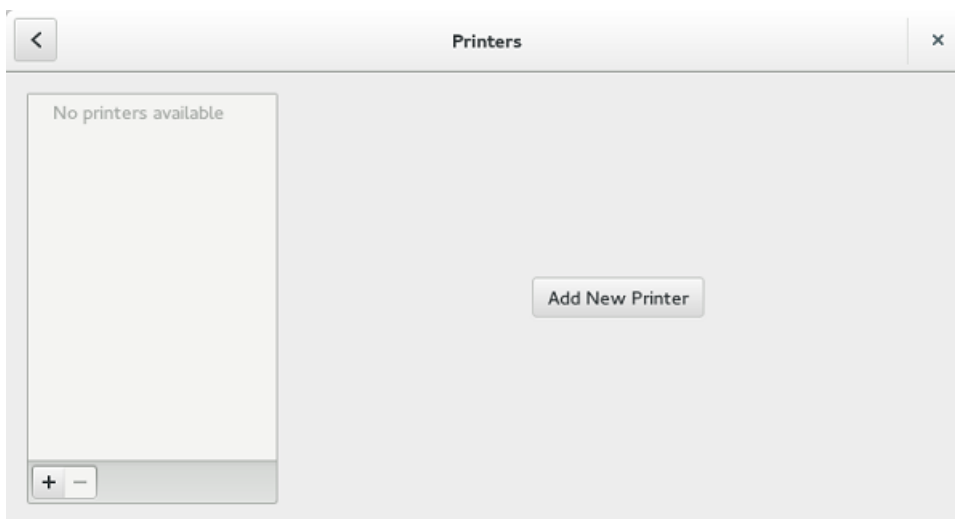


Figure 9. Add New Printer

- 1 Click the printer icon.
The **gnome-control-center printer** dialog box is displayed.
- 2 Click **Add New Printer** button to include the new printer in the printers list available on the left pane.
The **Add a new printer** window is displayed.
- 3 Enter the address of the printer or the text to filter results.
NOTE: If a USB printer is connected, then it is displayed by default. The printer is not found if wrong address is provided or the USB is not attached.
- 4 Click the **Add** option. Click **Print Test Page** to test the printer and click (-) icon to remove the printer.

Configuring the sound settings

By default, the Sound screen is available in both User mode and Admin mode. Any changes made through Sound screen is saved and retained for the built-in thinuser.

- 1 Click the **Output** tab to configure the audio output settings.

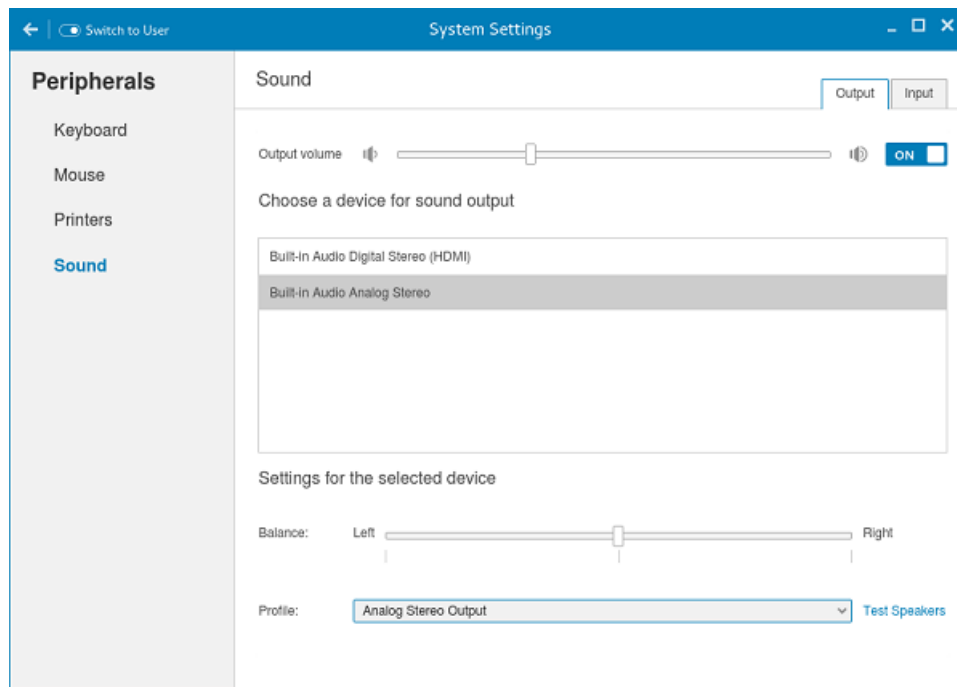


Figure 10. Sound Settings

- a Move the Output volume slider to adjust the output or speaker volume. Click the **Output volume** button to enable or disable the output volume.
 - b Select the device for sound output from the listed output devices. The default audio output is the Analog Output.
 - c Based on the channels available for the selected output device and profile, you can adjust the Balance and Fade values by moving Balance and Fade sliders respectively.
 - d Select the audio profile from the drop-down list.
 - e Click the **Test Speakers** option. A dialog box is displayed. You can perform the speaker testing by playing sample wave files.
- 2 Click the **Input** tab to configure the audio input settings.

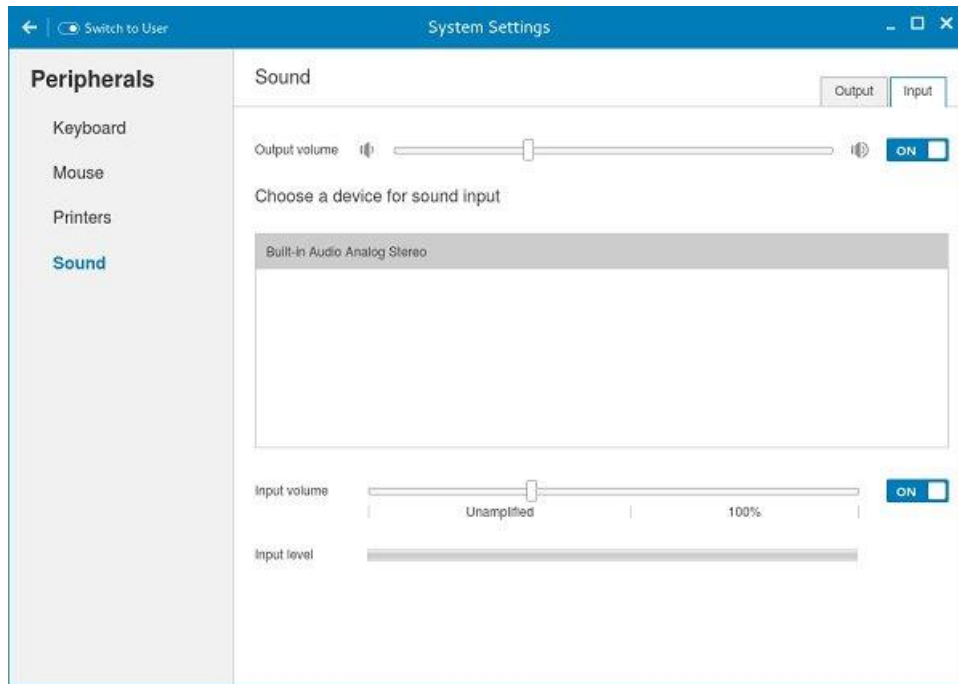


Figure 11. Sound Settings

- Move the Output volume slider to adjust the output or speaker volume. Click the **Output volume** option to enable or disable the output volume.
- Select the device for sound input from the listed input devices. The default audio input is the Analog input.
- Move the **Input Volume** slider to adjust the input or Mic volume. Click the **Input volume** option to enable or disable the input volume.
- The Input level meter bar shows the input volume peak level.

Configuring and using peripherals on WIE10

The thin client device has many ports available on it such as:

- USB Port— 6
- DisplayPort — 2

To provide the services through the ports, install the appropriate software for the thin client device.

NOTE:

- You can install other services and add-ins that are available from the Dell website for free or for a licensing fee. For more information, see [Dell support website](#).
- You can configure the thin client device to use Bluetooth- enabled Peripherals. For more information, see [Configuring Bluetooth connections](#).

Configuring Bluetooth connections

You can use your thin client device with other Bluetooth enabled devices, if it has Bluetooth capability.

NOTE:

- To retain your settings, disable the Unified Write Filter (UWF) and configure NetXClean.



To configure your thin client for Bluetooth Connections:

- 1 Log in as an Admin.
- 2 Click **Start Menu > Control Panel > Device Manager**.
The **Device Manager** window is displayed.
- 3 Expand **Bluetooth Radios** and double-click any Bluetooth icon. For example, double-click **Generic Bluetooth Radio** to manage the existing Bluetooth device. You can also update the drivers in the **Update** tab.

To add another Bluetooth-enabled device to the thin client device, use the **Add a Device** wizard.

- a To open the **Devices and Printers** window, click the **Devices and Printers** icon in Control Panel.
 - b Click **Add a Device**.
The **Add a Device** wizard is displayed.
- 4 Refer to the device documentation and follow the instructions to turn on Bluetooth on the Bluetooth-enabled device. When the device is discovered by the thin client device, select the device. Click **Next** and follow the wizard.



Power state

Wyse 5060 thin client running WES7P.

You can change the power state options of the thin client device by following the steps mentioned here:

- 1 On the task bar, click the **Start** button.
- 2 From the **Start** menu, point to the arrow next to the **log off** button, and then click any one of the following:
 - **Restart**— To restart your thin client.
 - **Sleep**— This mode enables the power-saving state and allows the thin client to quickly resume full power operations when you want to start working again.
 - **Shut down**— Preferred for orderly closing of the operating system.
- 3 You can also log off the thin client by any of the following ways:
 - From the **Start** menu, click **log off** if you want to log off your thin client.
 - Press CTRL+ALT+DEL and then click **log off**.
 - Press ALT+F4 to log off from the session.

NOTE: If automatic logon is enabled, the thin client will immediately logs on to the default user desktop. We recommend you use **Shut down** button to turn off your thin client.

Wyse 5060 thin client running Wyse ThinOS.

Use the Shutdown dialog box to select the available option you want:

- Classic Desktop — Click **Shutdown** in the Connect Manager or Desktop Menu.
- Zero Desktop — Click the **Shutdown** icon on the Zero Toolbar.

Wyse 5060 thin client running Wyse ThinLinux

On your initial configuration, Dell recommends that you connect by using a wired connection by plugging in the network connected Ethernet cable to your thin client.

After you turn on your thin client, you are automatically logged in to the thinuser account. By default, the password of the thinuser account is set to **thinuser**.

NOTE: In cases where a GDM login is needed (for example, AD/Domain login, PNAgent login and so on), the auto-login option can be turned off through the GUI or by using the INI.

Admin mode enables you to perform system administration tasks such as adding or removing connections and setting up specific device settings. To enter into the Admin mode, click the **Switch to Admin** button from Setting application screen to admin mode and then enter the default root password in the **Password Needed** window. The default root password is **admin**.

Wyse 5060 thin client running WIE10

You can change the power state options of the thin client device by following the steps mentioned here:

- 1 On the taskbar, click the **Start Menu** button.
- 2 Click **Power** on the start menu, and select any of the options:
 - **Sleep**— This mode uses little power, your thin client device starts up faster.
 - **Shut down**— Preferred for orderly closing of the operating system.



- **Restart**—The thin client device is turned off and turned on instantly.

You can also use the power state options by pressing the ALT+F4 key combination, and then selecting your preferred option from the drop-down list.

NOTE:

If automatic logon is enabled, the thin client will immediately log on to the default user desktop.



Software

This section describes about establishing and configuring the virtual broker connections for Wyse 5060 thin client.

Topics:

- [Configuring Connections locally on WES7P](#)
- [Configuring the broker setup on Dell Wyse ThinOS](#)
- [Configuring connections locally on Dell Wyse ThinLinux](#)
- [Configuring connections locally on WIE10](#)

Configuring Connections locally on WES7P

When you log in to your thin client as a User, the Windows desktop displays certain notable features.

You can perform the following activities:

- Configure Citrix Receiver session services, see [Using the Citrix Receiver on WES7P](#)
- Remote Desktop Connections, see [Configuring a remote desktop connection session services on WES7P](#)
- To configure vWorkspace connections, see [Configuring a vWorkspace Connection on WES7P](#)

Using the Citrix Receiver on WES7P

Citrix Receiver is a server-based computing technology that separates the logic of an application from its user interface. The Citrix Receiver client software installed on the thin client device allows the user to interact with the application GUI, while all of the application processes are executed on the server.

Citrix Receiver session services can be made available on the network using either Windows 2008/2012 Server with Terminal Services and one of the following installed:

- XenDesktop 7.5
- XenDesktop 7.6
- XenDesktop 7.8
- XenDesktop 7.9

NOTE: If you use a Windows 2003/2008 Server or Citrix XenApp 5.0 with Windows Server 2008, a Terminal Services Client Access License (TSCAL) server must also be accessible on the network. The server grants a temporary license, which expires after 120 days. After the temporary license expires, purchase and install the TSCALs on the server. You cannot make a connection without a temporary or permanent license.

To access the Citrix Receiver session:

- On the thin client Administrator desktop, double-click the **Citrix Receiver** icon.
- Click the **Start** button on the taskbar, click **All Programs**, and then click **Citrix Receiver** on the Programs Menu.

For information about configuring the Citrix receiver, go to www.citrix.com, and then refer to *Citrix Documentation*.



Configuring a remote desktop connection session services on WES7P

Remote Desktop Connection is a network protocol that provides a graphical interface to connect to another computer over a network connection.

Use the **Remote Desktop Connection** dialog box to establish and manage connections to remote applications.

To configure a Remote Desktop Connection:

- 1 Log in as user or administrator.
- 2 On the taskbar, click the **start** button, and then click **All Programs**.
- 3 Click **Remote Desktop Connection** on the Programs menu, and then click **Remote Desktop Connection**.

The **Remote Desktop Connection** dialog box is displayed.

You can also double-click the **Remote Desktop Connection** icon on the desktop to open the **Remote Desktop Connection** dialog box.

- 4 In the Computer box, enter the computer or the domain name. For advanced configuration options, click **Show Options**.
 - a In the **General** tab, you can enter the logon credentials, open an existing RDP connection, or save a new RDP connection file.
 - b In the **Display** tab, manage the display and the color quality of your remote desktop.
 - Move the slider to increase or decrease the size of your remote desktop. To use full screen, move the slider all the way to the right.
 - Select the color quality of your preference for your remote desktop from the drop-down list.
 - Select or clear the **Display the connection bar when I use the full screen** check box to display or hide the connection bar in full screen mode.
 - c In the **Local Resources** tab configure audio, keyboard, or local devices and resources for your remote desktop.
 - In the Remote audio section, click **Settings** for advanced audio settings options.
 - In the Keyboard section, from the drop-down list select the desired environment you want to apply the keyboard combinations.
 - In the Local devices and resources section, select devices and resources that you want to use in your remote session. Click **More** for more options.
 - d In the **Programs** tab, to start a default program with the remote session, select the **Start the following program on connection** check box and specify the details.
 - e In the **Experience** tab optimize the performance of your remote session based on the connection quality.

NOTE: If you find that the File Based Write Filter cache is filling up, you can disable Bitmap caching in the Experience tab after clicking Show Options in the window.

- f In the **Advanced** tab, in the **Server Authentication** section, from the drop-down list, select the action you want the thin client to perform when the server authentication fails.

In the **Connect from anywhere** section, click **Settings** to configure the connection settings such as Remote Desktop Gateway server settings and logon settings when you are working remotely.
- 5 Click **Connect**.
 - 6 Enter the login credentials for connecting to the remote session in the **Security** dialog box.

NOTE: The standard version (default) is used for a single monitor display, while the Span version can be used when extending a single session to two monitors for dual-monitor capable thin clients. The Span version can be used when extending a single session to two monitors for dual-monitor.

Configuring a vWorkspace Connection on WES7P

vWorkspace is a concept in which the desktop environment of a computer is separated from the physical computer and hosted as a virtual workspace on multiple environments, such as a virtual desktop infrastructure (VDI), terminal servers, and/or blade PCs running in a data center.

Workspace virtualization helps group and deliver a list of applications or desktops together as a single complete virtual workspace. It isolates and centralizes an entire computing workspace. vWorkspace provides flexible, location and platform independent access by delivering virtual workspace from multiple virtualization platforms.

To configure a vWorkspace connection:

- 1 Log in as a user or administrator.
- 2 On the taskbar, click **Start > All Programs > Dell Wyse vWorkspace**, or double-click the **vWorkspace** icon on the desktop. The **vWorkspace** window is displayed.
- 3 In the **vWorkspace** window, enter the vWorkspace Server IP, or your registered email address or website address, and then press **Enter**.
- 4 To retrieve your connector configuration from vWorkspace server, provide the Username, Password, and Domain credentials. Select the **Save Credentials (encrypted)** check box if you want to save your login credentials.
- 5 Select your preferred vWorkspace Farm location from the following options:
 - Inside Office
 - Outside Office
- 6 Click **Connect**.
- 7 In the **Login Credentials** dialog box, enter the following credentials to connect to the vWorkspace Farm:
 - Username
 - Password
 - Domain

The **vWorkspace Farm** screen is displayed.

For more information about managing your vWorkspace connection, go to documents.software.dell.com/vworkspace.

Using VMware Horizon Client on WES7P

VMware Horizon client is a locally installed software application that communicates between View Connection Server and Thin Client OS. It provides access to centrally hosted virtual desktops from your thin clients. VMware session services can be made available on the network after you install the VMware Horizon 6. It provides virtualized or hosted desktops and applications through a single platform to end users.

Use the **VMware Horizon Client** window to connect to a virtual desktop. To open the **VMware Horizon Client** window, perform either of the ways mentioned here:

- On the taskbar, click **Start > All Programs > VMware > VMware Horizon Client**.
- Double-click the **VMware Horizon Client** icon on the desktop.

To use the VMware Horizon Client, follow the guidelines mentioned here:

- 1 To add a new server, click the **New Server** button or double-click the **Add Server** icon in the upper-left corner of the **VMware Horizon Client** window. The **VMware Horizon Client** dialog box is displayed.
- 2 In the **VMware Horizon Client** dialog box, enter the host name or IP address of a View Connection Server in the Connection Server box, and then click **Connect**.
- 3 Enter your credentials, and then click **Login**.
- 4 Select a desktop from the list, and then click **Connect**. VMware Horizon Client connects to the selected desktop. After connection is established, you can view the client window.



For more information, go to www.vmware.com, and refer to the VMware Horizon View Client documentation.

NOTE:

For additional options, click the **options** icon in the upper-right corner of the **VMware Horizon Client** window. The available options are Help, Support information, About VMware Horizon Client, Configure SSL, and Hide the selector after launching an item.

Using Ericom PowerTerm WebConnect

Ericom PowerTerm WebConnect maximizes the value of Terminal Servers (RDS), Virtual desktops (VDI), Web applications, cloud services, and legacy host systems. For IT departments of all sizes, PowerTerm WebConnect streamlines the management and utilization of IT resources, while protecting past IT investments and significantly improving the end user-experience. You can access the Ericom Power Term WebConnect either as a stand-alone application or on a network.

1 Accessing Ericom Power Term WebConnect as a stand-alone:

a Log in as a user or administrator.

b Double-click **PtStart** icon on the desktop.

The **Ericom PowerTerm WebConnect** window is displayed.

c Enter IP Address in the **Server Address** field, and click **OK**.

When you start accessing it for the first time PtStart.exe file is generated and then Power Term WebConnect Login window is displayed. Else, Power Term WebConnect Login window is displayed.

PtStart.exe file provides the details regarding the server IP address, the folder in which it is installed and the path to reach the folder.

d In the Power Term WebConnect Login window, enter your credentials, and click **Login**.

For example: User Name : **administrator@domain.com**.

Password: *********

DELL – Ericom Application Zone window is displayed.

e In the **DELL – Ericom Application Zone** window, published applications such as **Blaze demo server**, **RDP demo server**, **Ericom server** and **Paint** are displayed.

Double-click any of these to access them.

You can also add your own applications from the server site.

f To create a shortcut on your desktop, click **Options > Create a shortcut on Desktop** in the **DELL – Ericom Application Zone** window.

g To log out, click **File > Logout** in **DELL- Ericom Application Zone** window.

2 Accessing Ericom Power Term WebConnect through Web Browser :

a Click **Internet Explorer** icon in the taskbar on Thin Client Administrator desktop.

Internet Explorer web page is displayed.

b Enter the URL **http://serverIP/FQDNWebConnect6.0/AppPortal/Index.asp** to access the Ericom Power Term Emulation.

PowerTerm WebConnect Application Portal page is displayed.

c In the **PowerTerm WebConnect Application Portal** page, enter the credentials and also specify the domain name, then click **Login**

For example: Username: **administrator**

Password: *********

Domain Name

d After you Log in, Published Desktops and Applications such as **Blaze demo server**, **RDP demo server** and **Paint** are displayed.

Double-click any of these to access them on a new Web page.

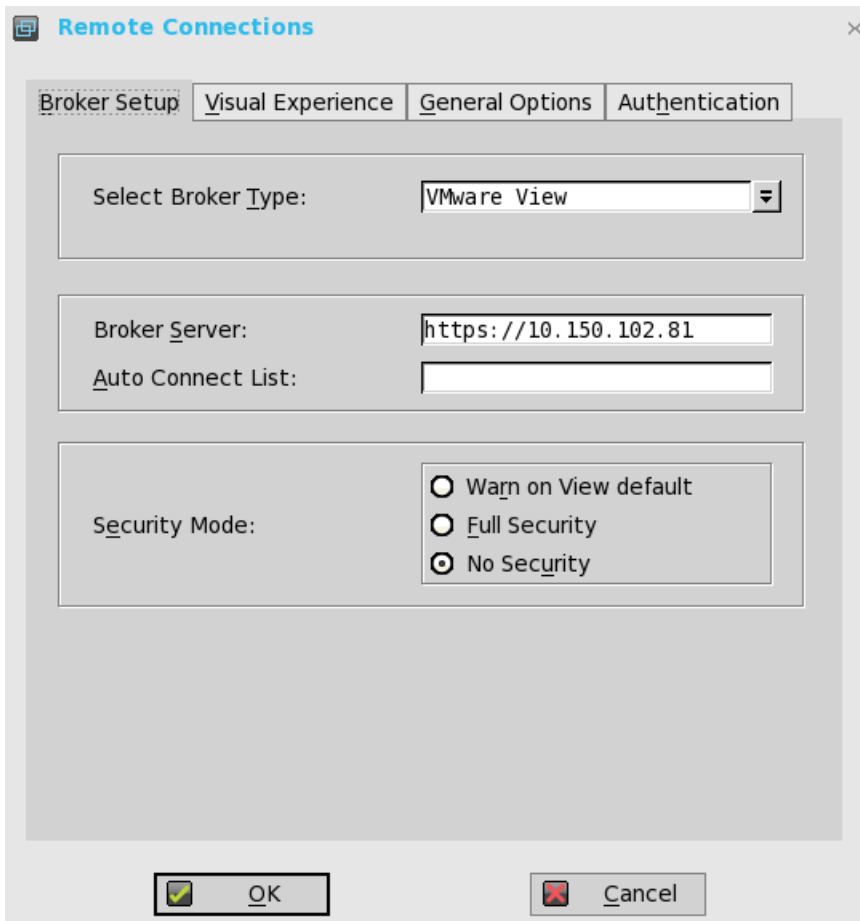
You can also add your own applications from the server site.

e Click **Logout** on the left side of **PowerTerm WebConnect Application Portal** page to end the Ericom Power Term WebConnect session.

Configuring the broker setup on Dell Wyse ThinOS

To configure the Broker setup:

- 1 From the desktop menu, click **System Setup**, and then click **Remote Connections**. The **Remote Connections** dialog box is displayed.



- 2 Select **Broker type** from the drop-down list.
 - a If you select **None** from the list, click either of the following connection protocols:
 - b If you select the **Citrix Xen**, use the following guidelines:
 - Select the check box to enable the **StoreFront style**.
 - **Broker Server**— Enter the IP address of the Broker Server.
 - Select the check box to enable automatic reconnection at logon.

NOTE:

If you enable the automatic reconnection, you are able to select from the reconnection options. Click either of the options where you can connect to the disconnected sessions only or connect to both active and disconnected sessions.

- Select the check box to enable automatic reconnection from the button menu.

NOTE:

If you enable the automatic reconnection, you are able to select from the reconnection options. Click either of the options where you can connect to the disconnected sessions only or connect to both active and disconnected sessions.

- **Account Self-service Server**— Enter the IP address of the account self-service server.
 - **XenApp** — Use this option, if you want to set default settings to **XenApp**.
 - **XenDesktop**— Use this option, if you want to set default settings to **XenDesktop**.
- c If you select the **VMware View**, use the following guidelines:
- **Broker Server**— Enter the IP address of the Broker server.
 - **Security Mode**
 - Use this option to select the Security Mode. The available options are **Warn on View default, Full security, and No security**.
- d If you select the **Microsoft**, enter the IP address of the broker server in the **Broker Server** box, and then click **OK** to save the settings.
- e If you select **Dell vWorkspace**, use the following guidelines:
- **Broker Server**— Enter the IP address of the Broker Server.
 - Select the check box to enable vWorkspace Gateway.
 - **vWorkspace Gateway**— Enter the IP address of the vWorkspace gateway.
- f If you select **Other**, you must enter the IP address of the broker server in the **Broker Server** box.
- 3 Click **OK** to save the settings.

Configuring connections locally on Dell Wyse ThinLinux

On the **System Settings** page, click the **Connections** icon. The Connections page contains the following tabs:

- Citrix
- VMware

NOTE: The description names for all the connections can not be edited once you create the connection.

Configuring and managing Citrix connections

The **Citrix Connections** page enables you to create and manage the Citrix connections both locally and globally.

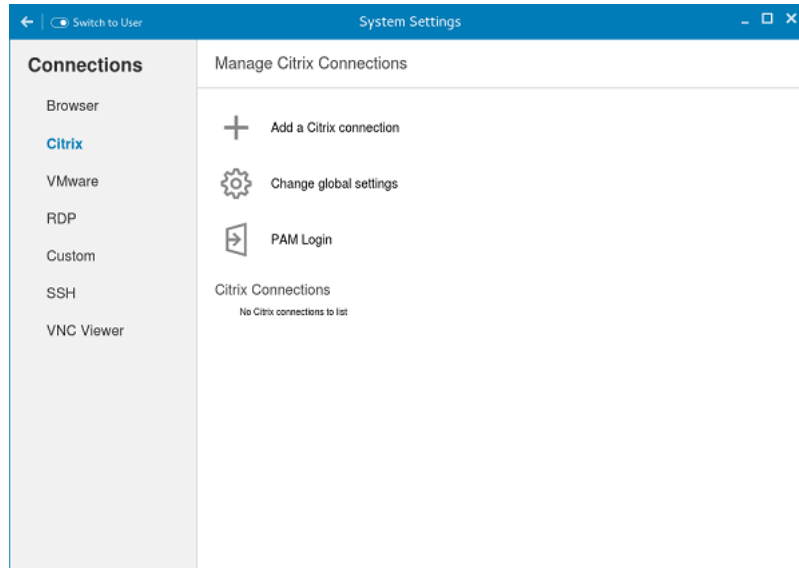


Figure 12. Citrix connection settings

To configure the local **Citrix** settings:

- 1 Click the **+** icon to add a new **Citrix Connection**.

The **Citrix Connections** page is displayed.

- 2 Enter the name of the **Citrix connection** for which you specify the Server URL address.
- 3 From the **Connection Type** drop-down list, select any of the following connection types:
 - Server
 - Published Application
 - Storefront
- 4 Click **Save** to save the changes.

Configuring and managing VMware connections

The **VMware connections** page enables you to create and manage the View client 3.5 connections.

To configure the VMware Settings, complete the following task:

- 1 Click the **+** icon to add a new VMware Connection.

The **VMware Connections** page is displayed.

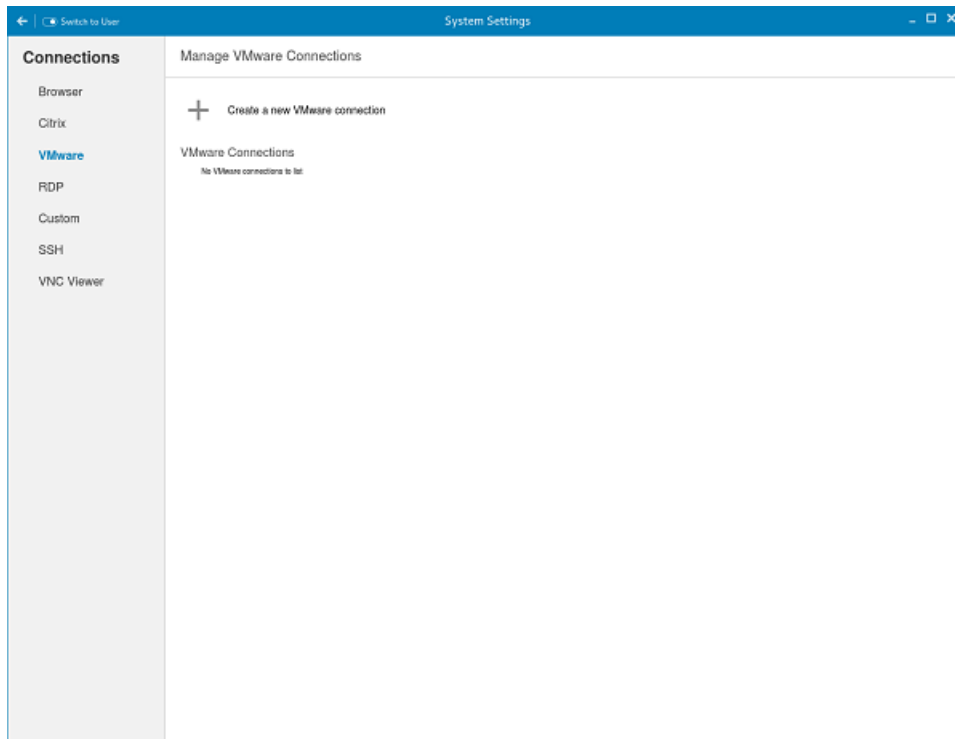


Figure 13. VMware connections settings

- 2 Enter the name of the **VMware connection**.
- 3 Configure the following options in the **Login** tab:

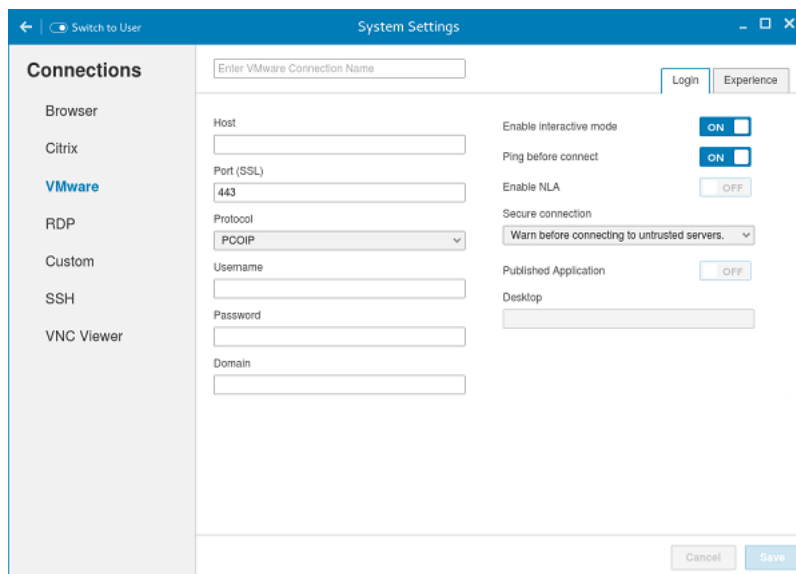


Figure 14. VMware login settings

Parameter	Description
Host	Enter the host name or IP address or FQDN of the Horizon of the VMware View Server.
Port	Enter the port number of the host.

Parameter	Description
Protocol	From the drop-down list, select the specific protocol.
Username	Enter the User ID that is used to log in to the remote Horizon server.
Password	Enter the password that is used to log in to the remote Horizon server.
Published Application	Click the ON/OFF button to enable or disable this option. If enabled, specify the Published Application name. If disabled, specify the Published desktop name.
Enable interactive mode	Click the ON/OFF button to enable or disable this option. If enabled, then after a successful connection to the server, it displays all the published application and desktop icons. You can start the applications or desktop sessions based on your choice. If disabled, then the Published Applications option is enabled in the Login tab. Selecting that option enables you to directly start the application or desktop that you specify.
Ping before connect	Click the ON/OFF button to enable or disable this option. If enabled, it pings the connection is checked in server IP/FQDN before connecting to a session.
Enable NLA	Click the ON/OFF button to enable or disable this option. Enable the Network Level Authentication (NLA), if NLA is enabled on your remote computer. Your remote computer requires NLA user authentication before you establish a full Remote Desktop connection and the login screen is displayed.
Secure connection	Click the Secure Preferences tab and select any of the options that determine how the client should proceed when it cannot verify that your connection to the server is secure.
Domain	Enter the Domain name. It is used to log in the remote Horizon server.
Desktop	If interactive mode is disabled, you can specify Published desktop name.
Application	If interactive mode is disabled, you can specify the Published application name.

4 The following options must be configured in the **Experience** tab:



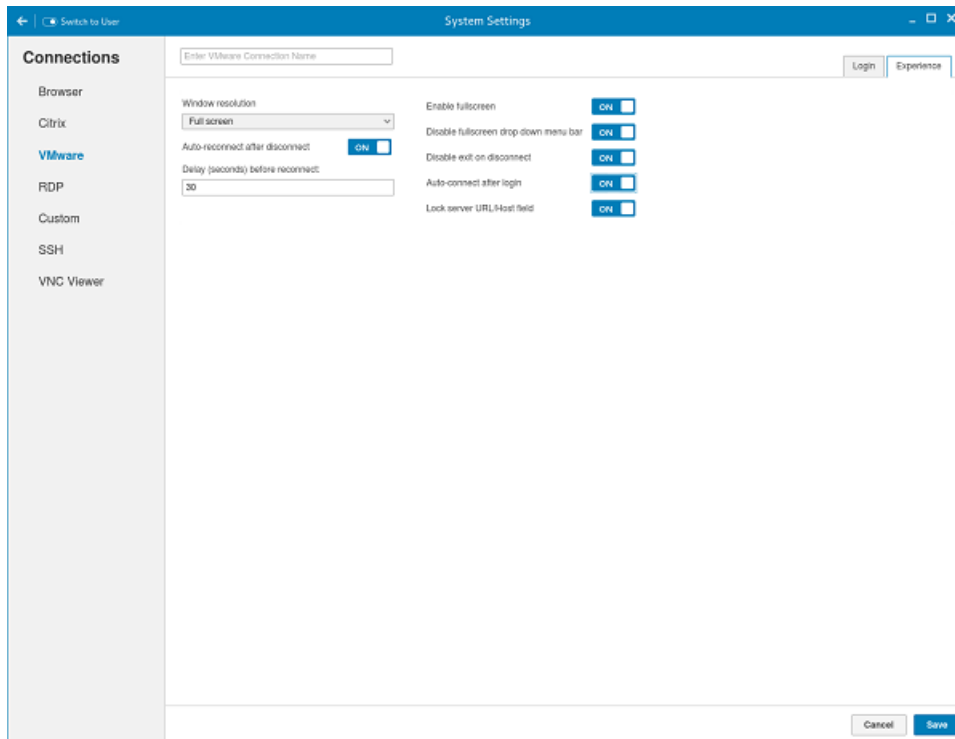


Figure 15. VMware experience settings

Parameter	Description
Windows resolution	Select the Windows resolution that you want to get the best display on your monitor. The available resolutions are: Use All Monitors Full Screen Large Screen Small Screen 1024X768 800X600 640X480
Auto-Reconnect after disconnect.	Click the ON/OFF button to enable or disable this option. If enabled, the connection is automatically re-established after you disconnect from the session.
Delay (seconds) before reconnect.	Select the amount of time in seconds to delay the reconnection attempt after a disconnection occurs.
Enable fullscreen	Click the ON/OFF button to enable or disable this option. Select this option to view the remote session in full screen mode in all the monitors.
Disable fullscreen drop-down menu bar	Click the ON/OFF button to enable or disable this option.

Parameter	Description
	Select this option to disable the drop-down menu bar in the full screen mode.
Disable exit on the disconnect	Click the ON/OFF button to enable or disable this option. Select this option if you do not want the Horizon server to retry connecting if there is a connection error. You can typically select this option if you use kiosk mode.
Auto-connect after login.	Click the ON/OFF button to enable or disable this option. Select this option to reconnect automatically after a disconnection occurs.
Lock server URL/Host field	Click the ON/OFF button to enable or disable this option.

5 Click **Save** to save the settings.

Configuring connections locally on WIE10

When you log in to your thin client as a User, the Windows desktop displays certain notable features.

You can perform the following activities:

Configuring Citrix Receiver session services on WIE10

Citrix Receiver is a server-based computing technology that separates the logic of an application from its user interface. The Citrix Receiver client software installed on the thin client device allows the user to interact with the application GUI, while all of the application processes are executed on the server.

Citrix Receiver session services can be made available on the network using Windows 2008/2012 Server with Terminal Services and one of the following installed:

- XenDesktop 7.5
- XenDesktop 7.6
- XenDesktop 7.8
- XenDesktop 7.9
- XenDesktop 7.11

To install the software, use the instructions accompanying them. Make sessions and applications available to the thin client devices sharing the server environment.

NOTE:

If you use a Windows 2003/2008 Server or Citrix XenApp 5.0 with Windows Server 2008, a Terminal Services Client Access License (TSCAL) server must also be accessible on the network. The server grants a temporary license, which expires after 120 days. After the temporary license expires, purchase and install the TSCALs on the server. You cannot make a connection without a temporary or permanent license.

To configure a Citrix Receiver session:

- 1 Log in as an admin.
- 2 Access the Citrix Server using one of the following options:
 - From the **Start Menu**, click **Citrix Receiver**.
 - Double-click the **Citrix Receiver** icon on the desktop.

After you log in to the Citrix Server, the **Add Account** window is displayed.



- 3 In the **Add Account** window, enter the Server IP address and then click **Next**.
 - For secure connections, enter Fully Qualified Domain Name (FQDN).
 - For non-secure connections, enter the IP address.
- 4 Enter the user credentials and then click **Log on**.
You can add an account by providing the IP address and you can view the details of the Citrix Receiver.
- 5 Click **Yes** and then click **Next**.
The Virtual desktop of the Citrix Receiver is displayed.
- 6 In the Virtual desktop window, click **Add Apps (+) > All Applications**.
You can select or clear the application check -boxes. The selected applications are displayed on the virtual desktop.
- 7 On the virtual desktop, click **Settings** to:
 - Refresh
 - Add or Delete Server account
 - Log-off

Configuring the Remote Desktop Connection session services on WIE10

Remote Desktop Connection is a network protocol that provides a graphical interface to connect to another computer over a network connection.

To install the software, use the instructions accompanying them. Make sessions and applications available to the thin client devices sharing the server environment.

NOTE: If you use a Windows 2003/2008 Server or with Windows Server 2008, a Terminal Services Client Access License (TSCAL) server must also be accessible on the network. The server grants a temporary license, which expires after 120 days. After the temporary license expires, purchase and install the TSCALs on the server. You cannot make a connection without a temporary or permanent license.

To configure a **Remote Desktop Connection**:

- 1 Log in as a user or administrator.
- 2 From the **Start** menu, click **Remote Desktop Connection**, or double-click the **Remote Desktop Connection** icon on the desktop.
The **Remote Desktop Connection** window is displayed.
- 3 In the **Computer** box, enter the computer or the domain name.
For advanced configuration options, click **Show Options**.
 - a In the **General** tab, you can enter the logon credentials, edit or open an existing RDP connection, or save a new RDP connection file.
 - b In the **Display** tab, manage the display and the color quality of your remote desktop.
 - Move the slider to increase or decrease the size of your remote desktop. To use full screen, move the slider all the way to the right.
 - Select the color quality of your preference for your remote desktop from the drop-down list.
 - Select or clear the **Display the connection bar when I use the full screen** check box to display or hide the connection bar in full screen mode.
 - c In the **Local Resources** tab configure audio, keyboard, or local devices and resources for your remote desktop.
 - In the Remote audio section, click **Settings** for advanced audio settings options.
 - In the **Keyboard** section, choose when and where to apply keyboard combinations.
 - In the **Local devices and resources** section, select devices and resources that you want to use in your remote session. Click **More** for more options.
 - d In the **Experience** tab optimize the performance of your remote session based on the connection quality.

NOTE:

If you find that the Unified Write Filter cache is filling up, you can disable Bitmap caching in the **Experience** tab after clicking **Show Options** in the window.

- e In the **Advanced** tab, select the action to be taken when the server authentication fails and configure settings for connection through Remote Gateway.
- 4 Click **Connect**.
- 5 Enter the login credentials for connecting to the remote session in the **Security** dialog box.
The remote desktop is displayed with the connection bar on the top if you select the **Display the connection bar** option in step 3 b.

Configuring vWorkspace connection on WIE10

vWorkspace is a concept in which the desktop environment of a computer is separated from the physical computer and hosted as a virtual workspace on multiple environments, such as a virtual desktop infrastructure (VDI), terminal servers, and/or blade PCs running in a data center.

Workspace virtualization helps group and deliver a list of applications or desktops together as a single complete virtual workspace. It isolates and centralizes an entire computing workspace. vWorkspace provides flexible, location and platform independent access by delivering virtual workspace from multiple virtualization platforms.

To configure a vWorkspace connection:

- 1 Log in as a user or administrator.
- 2 On the **Start Menu**, click **Dell Wyse vWorkspace**, or double-click the **vWorkspace** icon on the desktop.
The **vWorkspace** window is displayed.
- 3 In the **vWorkspace** window, enter the vWorkspace Server IP, or your registered email address or website address, and then press **Enter**.
- 4 To retrieve your connector configuration from vWorkspace server, provide the Username, Password, and Domain credentials. Select the **Save Credentials (encrypted)** check box if you want to save your login credentials.
- 5 Select your preferred vWorkspace Farm location from the following options:
 - Inside Office
 - Outside Office
- 6 Click **Connect**.
- 7 In the **Login Credentials** dialog box, enter the following credentials to connect to the vWorkspace Farm:
 - Username
 - Password
 - Domain

The **vWorkspace Farm** screen is displayed.

For more information about managing your vWorkspace connection, go to documents.software.dell.com/vworkspace.

Using VMware Horizon Client on WIE10

VMware Horizon Client is a locally installed software application that communicates between View Connection Server and thin client OS. It provides access to centrally hosted virtual desktops from your thin clients.

VMware session services can be made available on the network after you install the VMware Horizon 6. It provides virtualized or hosted desktops and applications through a single platform to end users.

To connect to a virtual desktop, use the **VMware Horizon Client** window.

To open and use the **VMware Horizon client** window:

- 1 Log in as a user or administrator.
- 2 Access the **VMware Horizon client** window using one of the following options:



- From the **Start Menu**, click **VMware > VMware Horizon Client**.
- Double-click the **VMware Horizon client** icon on the desktop.

The **VMware Horizon client** window is displayed.

- 3 In the **VMware Horizon client** window, use the following guidelines:
 - a To add a new server connection, either click the **New Server** option or double-click the **Add Server** icon in the **VMware Horizon client** window.
The **VMware Horizon client** dialog box is displayed.
 - b In the **VMware Horizon Client** dialog box, type a host name or an IP address of a VMware Horizon Connection Server in the connection server box.
 - c Click **Connect**.
 - d In the **Login** dialog box, enter the user name and login password in the respective boxes.
 - e From the **Domain** drop-down list, select the domain where the server is located.
 - f Click **Login**.
The VMware Horizon Client connects to the selected desktop. After connection is established, the list of published desktop is displayed.
 - g Right-click the particular application or desktop icon, and then click **Launch** to connect to that application or desktop.

For more information, refer to VMware Horizon Client documentation on www.vmware.com.

NOTE:

Certificate checking mode— Certificate checking mode determines how the client proceeds when the client cannot verify that your connection to the server is secure. We recommend that you do not change this setting unless instructed to do so by your system administrator.

To access the certificate checking mode, click the icon on the upper-right corner of the window, and then click **Configure SSL** from the drop-down list. In the **VMware Horizon client SSL configuration** dialog box, select from any of the following options based on your requirements:

- Never connect to untrusted servers
- Warn before connecting to untrusted servers
- Do not verify server identify certificates

Using Ericom Connect-WebConnect client on WIE10

You can access the Ericom Connect-WebConnect client either as a stand-alone application or on a network.

- 1 Accessing Ericom Connect-WebConnect Client as a stand-alone:
 - a Log in as a user or administrator.
 - b From the **Start Menu**, click **Ericom Connect-WebConnect client > Ericom Connect-WebConnect client** or double-click the **Ericom Connect-WebConnect client** icon on the desktop.
The **Ericom AccessPad** login window is displayed.
 - c In the **Ericom AccessPad** Login window, enter your credentials, and click **Login**.

For example: User Name: **administrator@domain.com**.

Password: *********

DELL – Ericom Application Zone window is displayed.

NOTE: By default, the Ericom AccessPad login window is displayed in English (US) language. To set the UI to your preferred language, click the Globe icon in the lower-right corner of the window, and select your preferred language from the drop-down list.

- d In the **DELL – Ericom Application Zone** window, published applications such as **Blaze demo server**, **RDP demo server**, **Ericom server** and **Paint** are displayed.
Double-click any of these to access them.

You can also add your own applications from the server site.

- e To create a shortcut on your desktop, click **Options > Create a shortcut on Desktop** in the **DELL – Ericom Application Zone** window.
 - f To log out, click **File > Logout** in **DELL- Ericom Application Zone** window.
- 2 Accessing the Ericom Connect-WebConnect client through Web Browser:
- a Double-click the **Internet Explorer** icon.
The Internet Explorer web page is displayed.
 - b Enter the URL **http://serverIP/FQDNWebConnect6.0/AppPortal/Index.asp** to access the Ericom Power Term Emulation.
The **PowerTerm WebConnect Application Portal** page is displayed.
 - c In the **PowerTerm WebConnect Application Portal** page, enter the credentials and also specify the domain name, then click **Login**.
For example: Username: **administrator**

Password: *********

Domain Name
 - d After you Log in, Published Desktops and Applications such as **Blaze demo server**, **RDP demo server** and **Paint** are displayed.
Double-click any of these to access them on a new web page.
You can also add your own applications from the server site.
 - e Click **Logout** on the left side of **PowerTerm WebConnect Application Portal** page to end the Ericom Power Term WebConnect session.



Management interface of Dell Wyse 5060 thin client

This section describes about the management interface of Dell Wyse 5060 thin client.

Topics:

- [Wyse Device Manager \(WDM\) software for remote administration](#)
- [Configuring WDA settings on WES7P/WIE10](#)
- [Configuring the WDA settings on Dell Wyse ThinOS](#)
- [Configuring the WDA settings on Dell Wyse ThinLinux](#)

Wyse Device Manager (WDM) software for remote administration

WDM servers provide network management services to the thin client complete user-desktop control—with features such as remote shadow, reboot, shutdown, boot, rename, automatic device check-in support, Wake-On-LAN, change device properties, and so on. With WDM you can manage all of your network devices from one simple-to-use console.

Configuring WDA settings on WES7P/WIE10

Wyse Device Agent allows you to configure/register the client to connect to WDM /CCM server and performs auto discovery for searching the available management server in the order of WDM and CCM.

The following are three types of registrations in WDA:

- Auto Discovery
- WDM Registration
- CCM Registration

Auto Discovery

If you selects **Auto Discovery** option from the following WDA UI, it allows the WDA to search for all the available management servers and register the thin client on the respective server in the order of WDM and CCM.

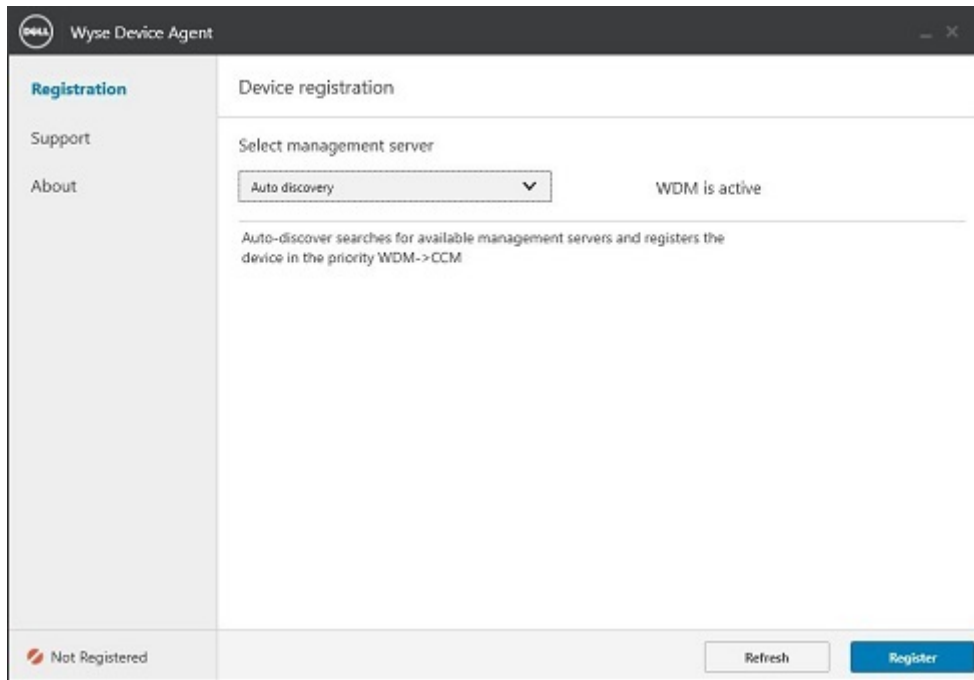


Figure 16. Auto discovery

It searches in the order of WDM and CCM and gets connected to the management server which is available.

Configuring WDM using WDA

Wyse Device Agent allows you to configure/register to WDM server.

In the below WDA UI, complete the following task:

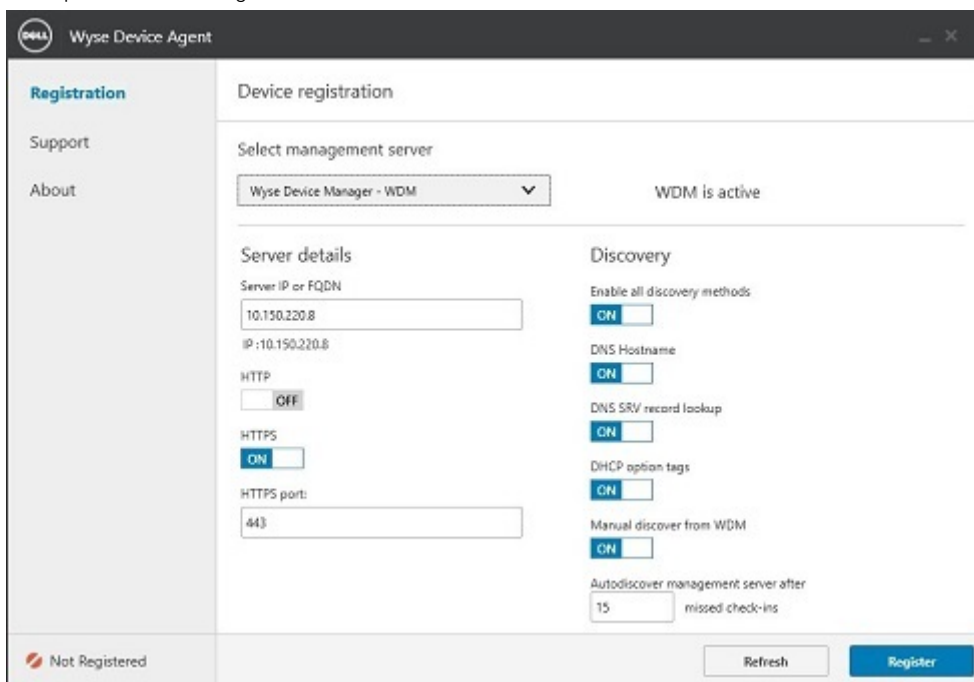


Figure 17. Device registration

- 1 Enter the IP address or FQDN of WDM server.



- 2 Click the On/Off button to enable or disable preferred type of server.
- 3 Enter the WDM server port number in the HTTPS port field. The default value is 443.

NOTE: Whenever Client is registered to a WDM server, all the details that are configured for discovery is taken from the server.

- 4 To connect with WDA Management Server, WDA supports the following types of discoveries:
 - DNS Hostname discovery
 - DNS SRV discovery
 - DHCP Option Tags
 - Manual discover from WDM

The WDA Agent works with the WDM services on the WDM server to perform the required actions.

The WDM Agent understands the commands sent by the WDM server and makes the necessary changes.

The WDM Agent provides status updates about the device.

Configuring CCM using WDA

WDA allows you to get registered to CCM server if you select the CCM option from the drop-down list.

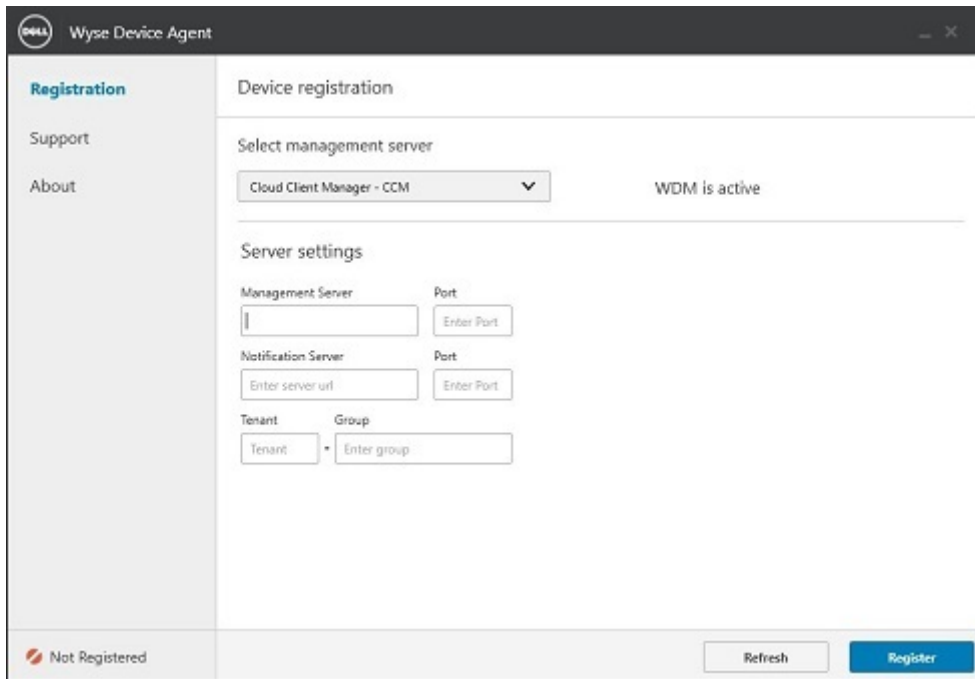


Figure 18. Device registration

- 1 Enter the IP address of the CCM management server.
- 2 Enter the CCM server port number in the provided field.
- 3 Enter the MQTT server details in the provided field.
- 4 Enter the Group Token details in the provided field.

NOTE: WDA supports only the DHCP discovery for CCM server.

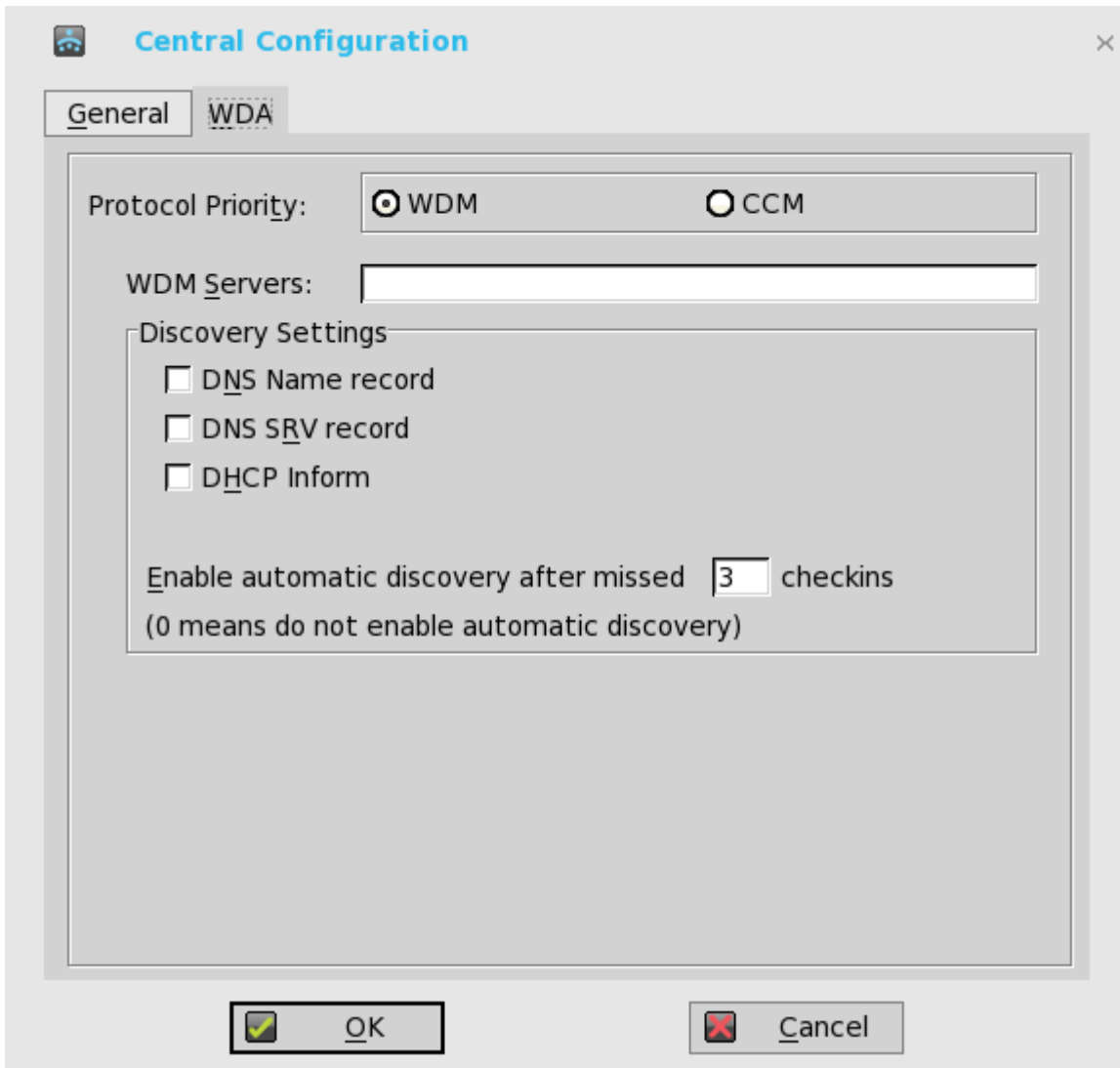
Configuring the WDA settings on Dell Wyse ThinOS

Use this tab to configure the WDM and CCM settings.



To configure the WDA settings, do the following:

- 1 From the desktop menu, click **System Setup**, and then click **Central Configuration**.
The **Central Configuration** dialog box is displayed.
- 2 Click **WDA**, and use the following guidelines.
WDM is selected by default. WDA service automatically runs after the client starts up.

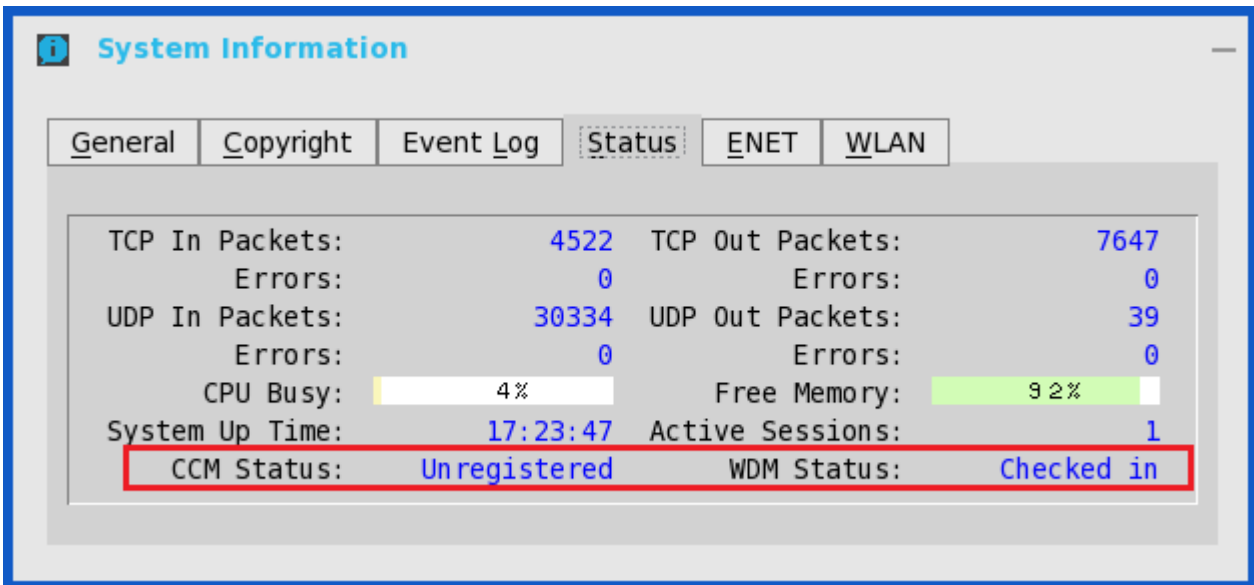


If the first discovery, for example, the WDM service is not successful, then it seeks for the next priority, for example, CCM service. This continues till a discovery is successful. If all discoveries fail, then it is started again automatically after a fixed time (24 hours).

- a **WDM Servers** — Enter the IP addresses or host names, if WDM is used. Locations can also be supplied through user profiles, if user INI profiles are used.
 - b **DNS Name Record** — (Dynamic Discovery) Allows devices to use the DNS host name lookup method to discover a WDM server.
 - c **DHCP Inform** — (Dynamic Discovery) Allows devices to use DHCP inform to discover a WDM Server.
 - d **Enable Automatic Discovery After Missed Check-ins** — Select the number of missed check-ins after which you want the auto discovery options enabled.
- 3 Click **OK** to save the settings.

Service checked in status is displayed in System Information.



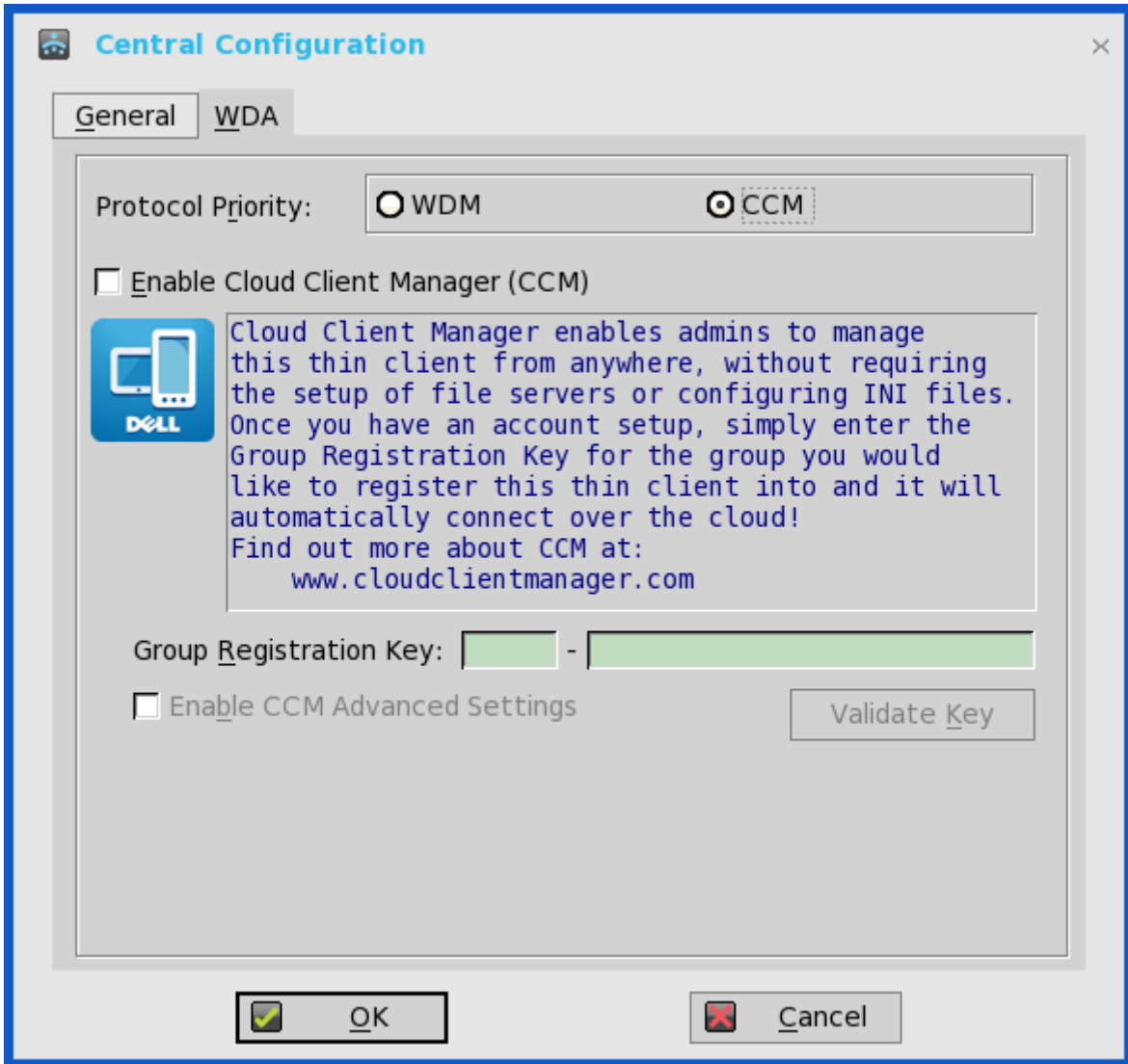


The following is the INI parameter for this feature:

```
WDAService={yes (default),no}Priority={WDM (default),CCM,"WDM;CCM","CCM;WDM"}
```

To configure the CCM settings, do the following:

- 1 Click **CCM**, and use the following guidelines.
 - a **Enable Cloud Client Manager (CCM)** — Select the check box to enable the Cloud Client Manager(CCM).



- b **Group Registration Key** — Enter the **Group Registration Key** as configured by your cloud Client Manager administrator for the desired group.

NOTE: If you enable the Cloud Client Manager (CCM), make sure that you have entered the Group Registration Key and enabled the CCM Advanced Settings.

- 2 Click **OK** to save the settings.

Configuring the WDA settings on Dell Wyse ThinLinux

The Wyse Device Agent (WDA) on the ThinLinux device supports only the features of Cloud Client Manager (CCM) device management solution. Wyse Device Agent is for configuring the CCM (Cloud Client Manager) client settings and registering a ThinLinux device into CCM and it is available only for admin user.



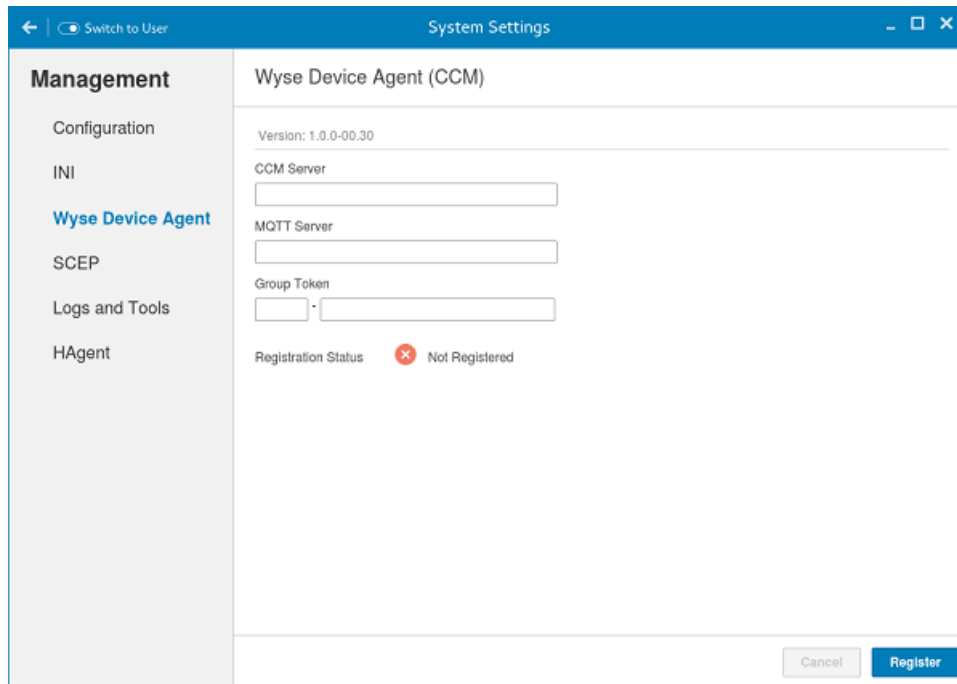


Figure 19. Wyse Device Agent (CCM)

If the device is not registered to a CCM server, the **Wyse Device Agent** screen shows the registration status as **Not Registered**.

- 1 In the **CCM Server** input box, enter the URL of CCM server you want to connect to.
- 2 In the **MQTT Server** input box, enter the IP address or hostname of Message Queue Telemetry Transport (MQTT) server.
- 3 In the Group Token input boxes, enter your group registration key to manage your ThinLinux device. This is a unique key for registering your thin client device. Thin clients can be directly registered to Groups directly and must have a Group Registration Key enabled to perform this action.
- 4 Do one of the following options:
 - Click **Register** to register your thin client on CCM server. When your thin client is successfully registered, the status is shown as Registered with green color icon next to the Registration Status label, and caption of Register button changes to Unregister.
 - Click **Unregister**, if you want to remove your thin client from the CCM management system. If Unregister fails, a dialog box for Force Unregister confirmation is displayed. Click **Yes** to forcefully unregister your device which is managed by CCM. When you perform Register or Unregister or Force Unregister from Agent screen, the applet should not be closed until Registration Status. After successful registration, you can access the CCM management server screen where you can view and manage Device Asset Details, Real-Time commands, and Troubleshooting information of your registered thin client.

Directing the Thin Client to CCM Server:

- To direct your thin client to CCM server, you must provide CCM/MQTT server details and Group registration Key. These details is discovered by Wyse Device Agent using any of the following ways:
 - DHCP Scope options
 - Using INI parameter
 - Using the Wyse Device Agent screen
- Directing the thin client to CCM Server using DHCP Scope options. The CCM/MQTT server details and Group Registration Key that are required for CCM registration can be obtained by querying the DHCP server with following option tags:
 - 199 – Scope option for Group Token (type = String, value = CCM-group-key).
 - 165 – Scope option for CCM server.
 - 166 – Scope option for MQTT server.
- Directing the thin client to CCM Server using INI parameters, INI syntax for CCM configuration:
 - CCMEnable={yes,no} CCMServer=<CCM Server URL> GroupRegistrationKey=<tenant code-group code> MQTTServer=<MQTT server>[:<MQTT port>]



 **NOTE:**

When INI discovery method is used for registering the device, if you want to unregister the device, you must delete the INI parameters and restart the device first and then unregister the device. Else you have to perform the unregister process twice. For more information, see *ThinLinux INI Guide* .



System specifications

Table 8. Brand/Sub-brand/Model Number/Chassis description/Series Level/Category Type

Features	Specification
Ambient operation	0 to 35 degree Celsius (32 to 95 degree F)
Non-operation temperature	-40 to 65 degree Celsius (-40 to 149 degree Fahrenheit)
Humidity	20% to 80% (non condensing)
Max Altitude	-15.2 to 3048m (-50 to 10,000 ft)
OEM Ready	Yes

Table 9. Processor/chipset

Features	Specification
SOC-AMD	Steppe Eagle
CPU core	AMD steppe Eagle GX-424 (2.4 GHz Quad Core) (TDP @ 15W adjusted by BIOS)
Graphics	AMD integrated graphics Radeon R5E
TPM	Version 1.2 Or 2.0 (option; FW configurable).

Table 10. Memory

Features	Description
System memory	<ul style="list-style-type: none"> · 4 GB/ 8 GB DDR3 1600MHz(2*SO-DIMM) · 8 GB (WES7P and WIE10)
storage	8GB/64GB SATA3 flash module only.
Network	WLAN+BT Combo Module: Intel 7265 M.22230(PCle/USB interface)

Table 11. I/O (front)

Features	Specification
LEDs	<ul style="list-style-type: none"> · 1*Power button (blue color) · 1*Power button (bi-color)
USB 2.0	2*USB 2.0
Audio	1*Audio combo jack

Table 12. I/O (rear)

Features	Specification
Antenna	2*Antenna (2T2R) option
USB 2.0	2*USB 2.0 (stacked)
USB 3.0	2*USB 3.0 (stacked)
Display Port	2*DP
Physical security	1*Kensington Lock Slot
RJ 45 Ethernet	1 * RJ-45 (10/100 /1000 Base-T Ethernet)
SFP interface RTL8211FS	Realtek RTL8111HN+8211FS

Table 13. Form factor

Features	Specification
Chassis leveraged	Dell Wyse 5020 (Oberon)
Chassis access	Sealed chassis, accessible with tools
Optional mounting	Wall mount / vesa mount
Height(Z)mm	40
Width(x)mm	185
Depth(Y)mm	170
Weight (pounds / kilograms)	0.93kg (2.05 lb)
Total no of HDDs/SDDs supported	0

Table 14. Power requirement

Features	Specification
AC input voltage range (comply with L.P.S)	19V 65W

Table 15. BIOS

Features	Specification
Standard BIOS, UEFI as implemented using Phoenix UEFI	Y
Support Wake-On-LAN	Y

Table 16. Operating system

Features	Specification
OS and system software	<ul style="list-style-type: none"> • ThinLinux • ThinOS • WES7P • Windows 10 IoT Enterprise(downgraded to WES7P)





Troubleshooting your system

You can troubleshoot your system using indicators like diagnostic lights, and error messages during the operation of the device.

Topics:

- [Power states and LED behavior](#)
- [Diagnostic power LED codes](#)

Power states and LED behavior

Table 17. Power states and LED behavior

States	Behavior
Indicators	<ul style="list-style-type: none"> • Power LED: Blue • Activity LED: Bi-color, Green/Amber • Power state: <ul style="list-style-type: none"> • S0–On: Power LED Blue, Activity LED green • S3 – Standby/Sleep: Power LED off, Activity LED blinking. • S5 – Off: All LED off • Operation State: <ul style="list-style-type: none"> • Boot: Power LED on, Activity LED. • In O/S: Power LED on, Activity LED green
Power button control	<ul style="list-style-type: none"> • On/Off-state detection: Push power button is < 4s • Force Off-state: Push and hold power button is >= 4s

Diagnostic power LED codes

Table 18. Diagnostic power LED codes

Power LED light status	Possible cause	Troubleshooting steps
At first power apply :No LED light up briefly	Both power LED and activity LED come up briefly and then turn off.	<ul style="list-style-type: none"> • Check AC power, call your utility company • Check AC power cord is plug-in • Check DC plug is plug into the unit
At first power apply : Both LED stay ON	Both power LED and activity LED come up briefly and then turn off	<ul style="list-style-type: none"> • Logic board defect • BIOS malfunctioning • Abnormal power source
Push power button the LED does not turn	<ul style="list-style-type: none"> • Power LED should come up in steady BLUE 	<ul style="list-style-type: none"> • Logic board defect • Power button defect



Power LED light status	Possible cause	Troubleshooting steps
	<ul style="list-style-type: none">Activity LED should turn on in steady AMBER	<ul style="list-style-type: none">Mechanical assembly misalign cause miss actuation

